

史瓦森
SHIWASEN

Focus·Expertise

2025

Polymer

Auxiliary Materials
System Solutions
Provider

One-stop service



Company Address: Room 616, No. 1329 Xiuzhou Avenue,
Xiuzhou District, Jiaxing City, Zhejiang Province, China
Sales Hotline: 0573-82221705
After-sales Service Hotline: 173-7762-1777
Official Website: www.shiwasen.com

Shanghai Shiwasen Building Technology Co., Ltd.
Jiaxing Shiwasen Optoelectronic Technology Co., Ltd.

Polymer Waterproofing

INDEPENDENT RESEARCH AND INNOVATION
THE LEADING ENTERPRISE



Single-Ply
Roofing Council

JGJ/T316

Standard
Co-authoring Unit



Multiple
Patents



EU CE
Certification



ISO
Certification



Specialization,
Refinement,
Uniqueness, and
Innovation

FA
BO
N
T
C
S

R&D · Innovation

Manufacturing · Service

COMPANY PROFILE



Since its establishment in 2019, Shanghai Shiwansen Building Technology Co., Ltd. has been dedicated to the research, development, manufacturing, and innovation of waterproofing auxiliary materials and supporting tools for single-ply roofing systems. As a professional leader in this supporting field, we are committed to providing comprehensive and reliable polymer waterproofing system solutions for our clients.

The company possesses a complete independent R&D system and manufacturing capabilities, with a product line covering a full range of roofing accessories, including mechanical fastening systems, prefabricated components, photovoltaic supports, and construction tools, meeting waterproofing construction needs across diverse scenarios. Leveraging deep industry expertise and technical accumulation, we continuously drive product innovation and process improvement, ensuring every product delivers outstanding performance and dependable quality.

Guided by the core philosophy of "Expertise Forges Quality, Service Creates Value," Shiwansen has established stringent R&D and production standards, earning deep trust and positive feedback from customers. We strive to become the most reliable roofing system partner for our clients, offering an end-to-end procurement and service experience - from product supply to technical support.



5000+

Factory Area



60+

Product Patents



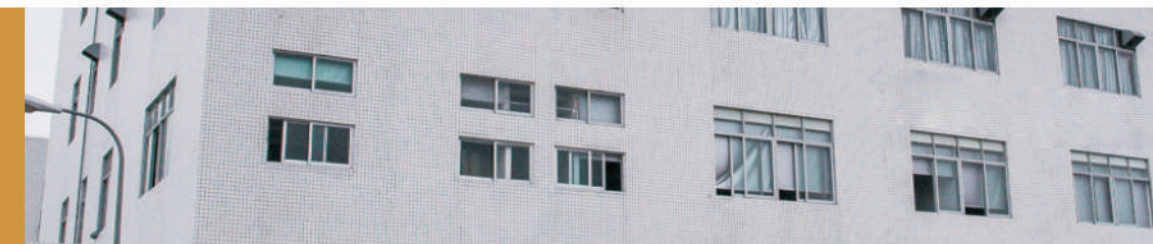
26+

26+ Years of
Industry Experience



500万m²+

Solar Support Applied
Energy Generation Area



CORPORATE CULTURE

Provide customers with professional technical guidance, consultation, and training
Contribute to the advancement of the waterproofing industry



VISON

Make polymer waterproofing simpler, more reliable, and intelligent



MISSON

Consistently create value for the polymer industry through innovative products and professional services



VALUE

Continuous Innovation, Reliable Quality, Integrity & Mutual Success

TECHNOLOGY



LEADING FIGURE: LI SONG - AN INDUSTRY-RECOGNIZED "WATER-PROOFING MASTER"

WITH OVER TWO DECADES OF DEDICATED EXPERIENCE IN THE POLYMER WATERPROOFING FIELD, MR. LI SONG HAS BEEN HONORED WITH THE HIGHEST PROFESSIONAL TITLE OF "DISTINGUISHED WATERPROOFING MASTER" BY THE CHINA NATIONAL BUILDING WATERPROOF ASSOCIATION. HE IS NOT ONLY A TWO-TIME NATIONAL CHAMPION IN THE WATERPROOFING INDUSTRY VOCATIONAL SKILLS COMPETITION BUT HAS ALSO BEEN RECOGNIZED AS A "NATIONAL TECHNICAL EXPERT," "JIANGSU CRAFTSMAN," AND "JIANGSU DUAL CREATIVE TALENT." MR. LI COMBINES EXCEPTIONAL HANDS-ON SKILLS, SYSTEMATIC R&D INSIGHT, AND MODERN MANAGEMENT CAPABILITIES.

HIS COMPREHENSIVE EXPERTISE - SPANNING MATERIAL PRODUCTION, CONSTRUCTION APPLICATION, AND SYSTEM DEVELOPMENT - HAS INSTILLED IN THE COMPANY A RELENTLESS PURSUIT OF QUALITY AND A DRIVE FOR CONTINUOUS INNOVATION. UNDER HIS LEADERSHIP, WE ENSURE THAT EVERY PRODUCT EMBODIES THE PROFESSIONAL STANDARDS AND TECHNICAL DEPTH WORTHY OF A TRUE MASTER.



Has applied for more than 60 patents, including inventions, utility models, and designs

CONTENTS



01 MECHANICAL FIXING SYSTEM

- P02 Screws
- P09 Sleeves
- P15 Non-Penetrating Gaskets
- P21 Gaskets
- P26 Battens
- P31 Load Distribution Ropes
- P32 Butyl Tape



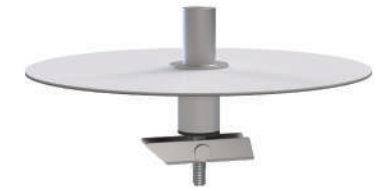
02 PREFABRICATED COMPONENTS

- P34 Inside/Outside Corner Prefabs
- P38 T-Joint Patch Prefab
- P39 Pipe Penetration Prefabs
- P44 Vent Pipe Prefabs
- P45 Composite Steel Plate Prefabs
- P49 Lightning Receptor Base Prefabs
- P53 Decorative Trims
- P54 Walkway Planks
- P57 Tunnel Accessories



03 CONSTRUCTION EQUIPMENT

- P59 Handheld Welding Torch
- P65 Automatic Welding Machine
- P68 Equipment Accessories



04 PHOTOVOLTAIC SUPPORT

- P70 Disc-Fixed PV Support
- P73 Blind Rivet PV Support
- P75 Flip-Rivet Fixed PV Support
- P77 Dual-Threaded PV Support
- P79 SBS Disc-Fixed PV Support
- P81 Flexible PV Support

01 Mechanical

EVERY SCREW SERVES AS A SILENT CORNERSTONE WITHIN YOUR PRODUCT'S STRUCTURE. AT SHIWANSEN, WE UNDERSTAND THAT EVEN NEGLIGIBLE CORROSION CAN TRIGGER A CHAIN OF FAILURE. THAT IS WHY WE EQUIP OUR SCREWS WITH AN EXCEPTIONAL PROTECTIVE COATING - THE NEXT-GENERATION NANO ZINC COMPOSITE LAYER.

THIS ADVANCED COATING SYSTEM BUILDS AN INTELLIGENT AND RESILIENT BARRIER ON THE SURFACE OF EACH SCREW. IT NOT ONLY EFFECTIVELY BLOCKS THE INTRUSION OF MOISTURE AND OXYGEN THROUGH ITS DENSE PHYSICAL STRUCTURE BUT ALSO INCORPORATES AN "ACTIVE DEFENSE" MECHANISM. SHOULD MICRO-DAMAGE OCCUR DURING PROCESSING OR USE, THE ZINC-BASED MATERIAL INITIATES A DYNAMIC SELF-REPAIR PROCESS, REGENERATING THE PROTECTIVE LAYER TO SEAL MICRO-PORES AND CRACKS - ELIMINATING CORROSION AT ITS INCEPTION.

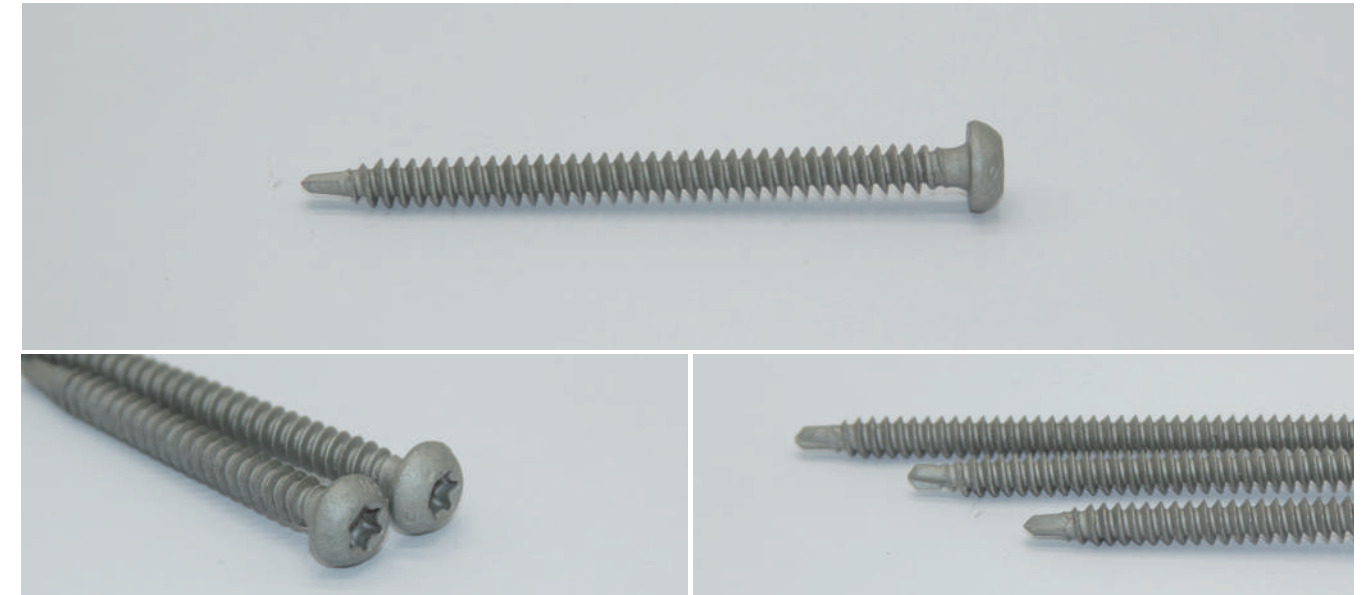
AS A RESULT, OUR SCREWS OFFER NOT ONLY OUTSTANDING INITIAL ANTI-CORROSION PERFORMANCE BUT ALSO LONG-TERM STABILITY AND RELIABILITY UNDER DEMANDING CONDITIONS. COMPATIBLE WITH VARIOUS BASE MATERIALS FROM ELECTROPLATED TO ZINC-ALUMINUM COATINGS, THIS TECHNOLOGY ENSURES THAT EVERY SCREW ACTS AS THE MOST DEPENDABLE CONNECTION POINT, SILENTLY SAFEGUARDING THE INTEGRITY AND SAFETY OF YOUR PRODUCTS.

EXPLORE NOW: DETAILED MODELS AND SPECIFICATIONS ACROSS OUR SCREW SERIES

SW5.5 Series Screws

Scope of Application //

Designed for use with our sleeve series products, these screws meet required tensile strength conditions while minimizing the risk of condensation. They are compatible with a wide range of common insulation layer thicknesses.



Technical Advantages //

- Effectively reduces condensation risk when used with matching sleeves, eliminating issues of condensation and condensate-induced corrosion caused by excessive thermal conductivity due to oversized screw dimensions
- Features a self-drilling point, reverse-thread design for fast and labor-saving drilling, significantly enhancing screw pull-out resistance and vibration-resistant performance

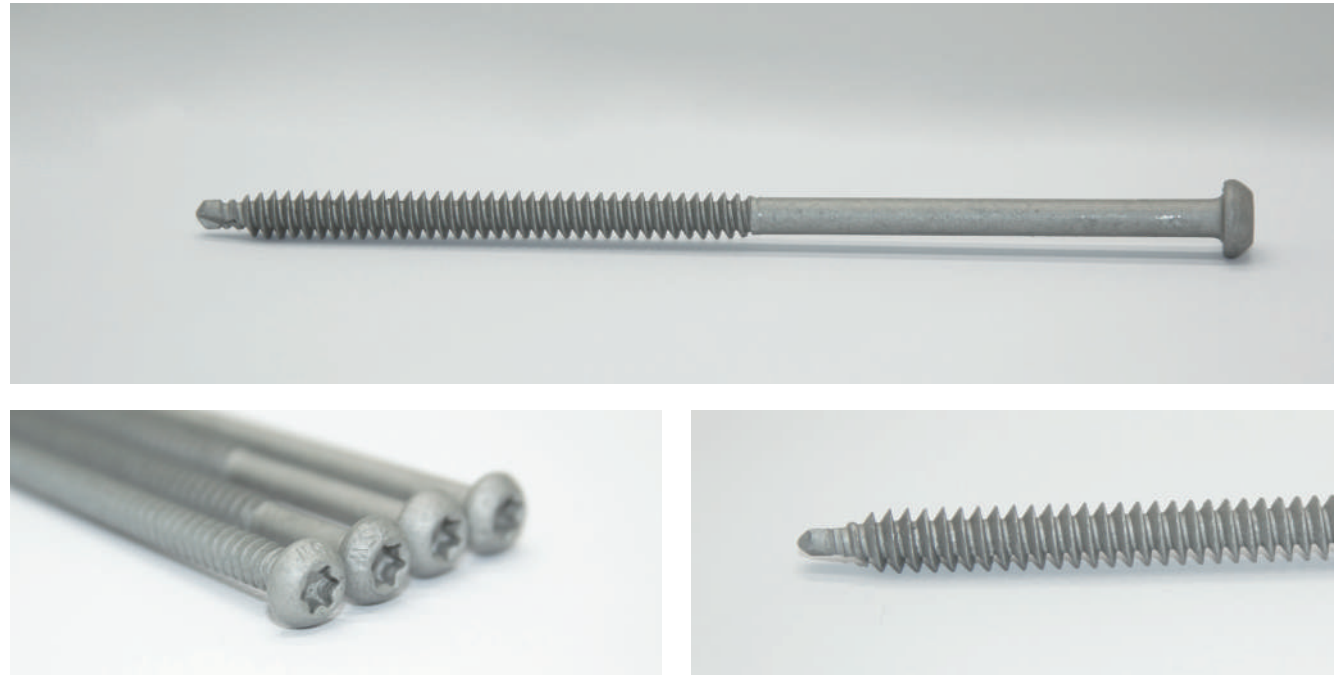
Technical Parameters //

Item	Detail
Thread Diameter	5.5mm
Screw Length	50/75/100mm
Drive	T30 Torx
Thread	Self-Tapping Reverse-Thread
Screw Material	Carbon Steel
Pull-out Strength (0.8 mm Steel Plate)	≥1800N
Corrosion Resistance	1500 h Neutral Salt Spray, 15 Cycles Acid Rain Test
Drilling Capacity	Steel Plate Thickness 0.63-1.25 mm
Compliance Standard	JG/T 576-2021

SW6.3 Series Screws

Scope of Application //

The SW6.3 series screws are designed for use with U-shaped battens, edge trim battens, gaskets, and sleeve products.



Technical Advantages //

- ✓ Features a self-drilling point, reverse design for fast and labor-saving drilling, significantly enhancing screw pull-out resistance and vibration-resistant performance

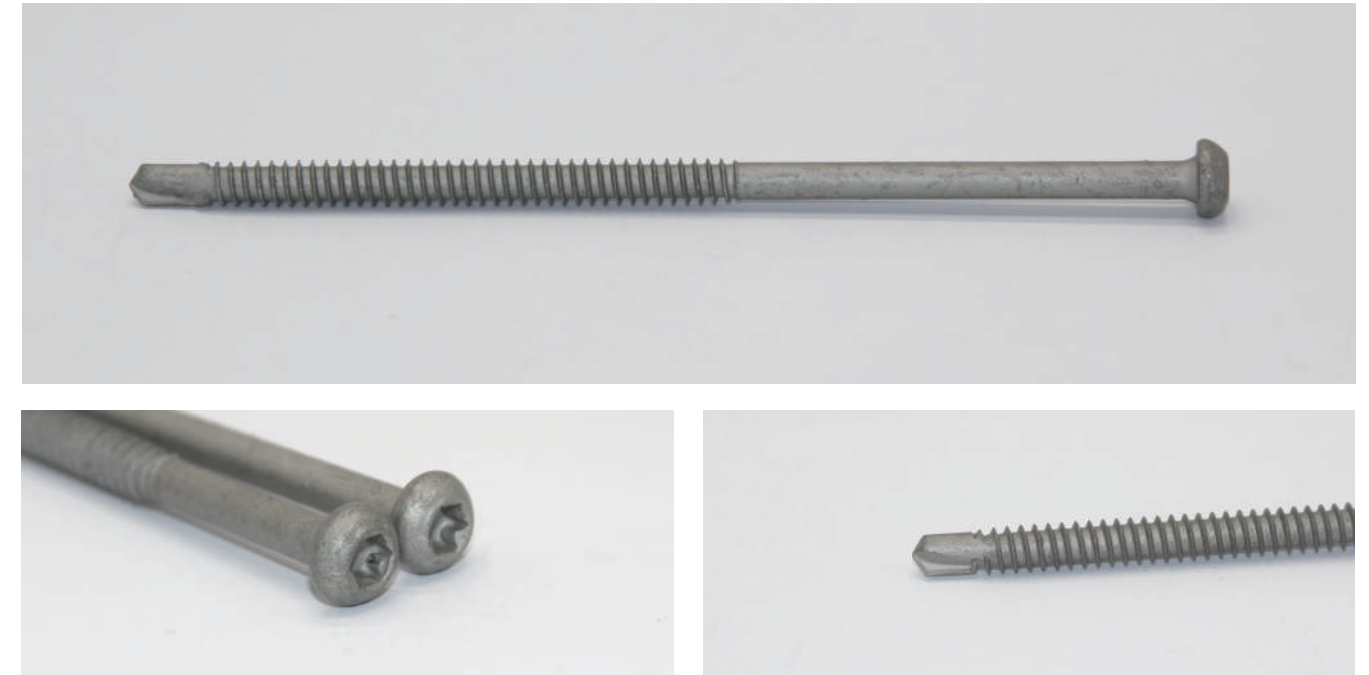
Technical Parameters //

Item	Detail
Thread Diameter	6.3mm
Screw Length	32/50/75/90/105/125/135/140/150/160/180/200/230mm
Drive	T30 Torx
Thread	Self-Tapping Reverse-Thread
Screw Material	Carbon Steel
Pull-out Strength (0.8 mm Steel Plate)	≥800N
Corrosion Resistance	1500 h Neutral Salt Spray, 15 Cycles Acid Rain Test
Drilling Capacity	Steel Plate Thickness 0.63-1.25 mm
Compliance Standard	JG/T 576-2021

H-6.3 Series Screws

Scope of Application //

Specifically designed for fastening purlins and thick steel plates, used in combination with battens, gaskets, and sleeve products.



Technical Advantages //

- ✓ Features a specialized No. 3 drill point and coarse thread design, ensuring powerful drilling performance and exceptional pull-out strength for secure and reliable fastening

Technical Parameters //

Item	Detail
Thread Diameter	6.3mm
Screw Length	32/50/75/90/105/125/135/140/150/160/180/200/230mm
Drive	T30 Torx
Thread	Self-Tapping Coarse Thread
Screw Material	Carbon Steel
Pull-out Strength (3 mm Steel Plate)	≥4500N
Corrosion Resistance	1500 h Neutral Salt Spray, 15 Cycles Acid Rain Test
Drilling Capacity	Steel Plate Thickness 1.25-3 mm
Compliance Standard	JG/T 576-2021

Hex Head H410 Finishing Screws

Scope of Application //

Specifically designed for batten fixation at membrane terminations, particularly suited for perimeter details such as skylights and parapets where thick steel plate serves as the substrate.



Technical Advantages //

- ✓ The Grade 410 material offers excellent corrosion resistance, ensuring long-term reliability in exposed applications

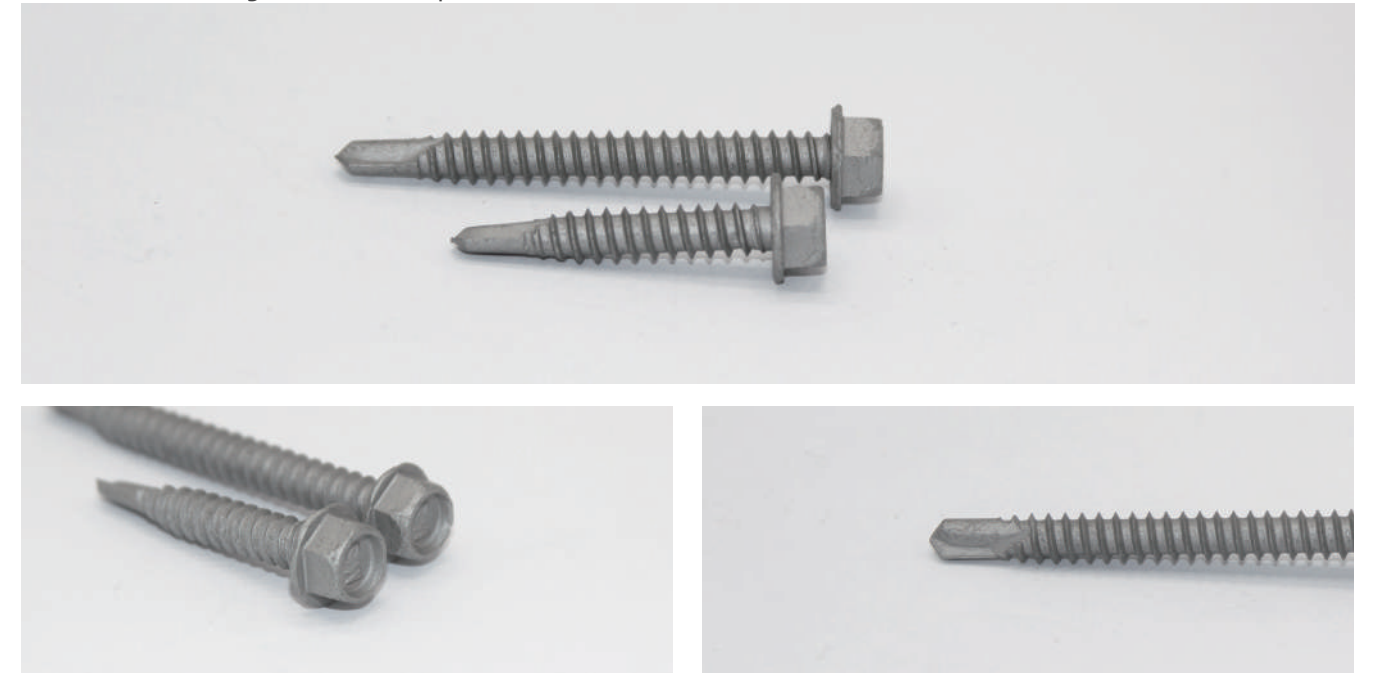
Technical Parameters //

Item	Detail
Thread Diameter	5.5mm
Length	25mm
Drive	8 mm Hex Socket
Thread	Self-Tapping Coarse Thread
Screw Material	410 Stainless Steel
Pull-out Strength (3 mm Steel Plate)	≥4500N
Drilling Capacity	Steel Plate Thickness 1.25-3 mm

Hex Head 5.5 Series Screws

Scope of Application //

The Hex Head 5.5 Series Screws are specifically designed for the exposed fastening of finishing battens and for connecting fused tiles to purlins.



Technical Advantages //

- ✓ Hex head design provides superior torque transmission for easier and more efficient installation
- ✓ No. 3 drill point delivers powerful penetration and fast drilling. The coarse thread ensures exceptional pull-out strength for secure, reliable fastening

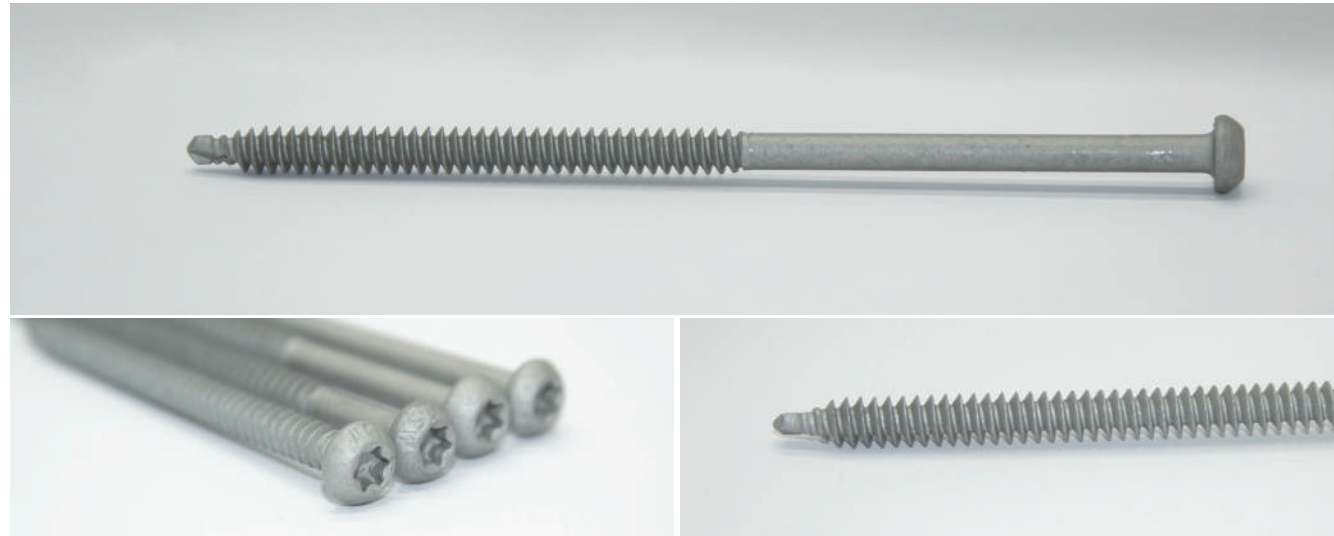
Technical Parameters //

Item	Detail
Thread Diameter	5.5mm
Length	32/50mm
Drive	8 mm Hex Socket
Thread	Self-Tapping Coarse Thread
Screw Material	Carbon Steel
Pull-out Strength (3 mm Steel Plate)	≥4500N
Corrosion Resistance	1500 h Neutral Salt Spray, 15 Cycles Acid Rain Test
Drilling Capacity	Steel Plate Thickness 1.25-3 mm

304 Bimetal Clad Screws

Scope of Application //

Suitable for mechanical fixing systems in highly corrosive environments, such as coastal plants, paper mills, tobacco processing facilities, and areas with constant 270% humidity. Can be used with battens, metal gaskets, or sleeves.



Technical Advantages //

- ✓ 304 stainless steel screw shank: Offers exceptional corrosion resistance, ensuring long-term durability of the screw body in harsh environments
- ✓ High-hardness 435 composite drill tip: Solves the common issues of softness and poor self-tapping performance associated with 304 material, enabling rapid self-drilling and ensuring quick, efficient installation

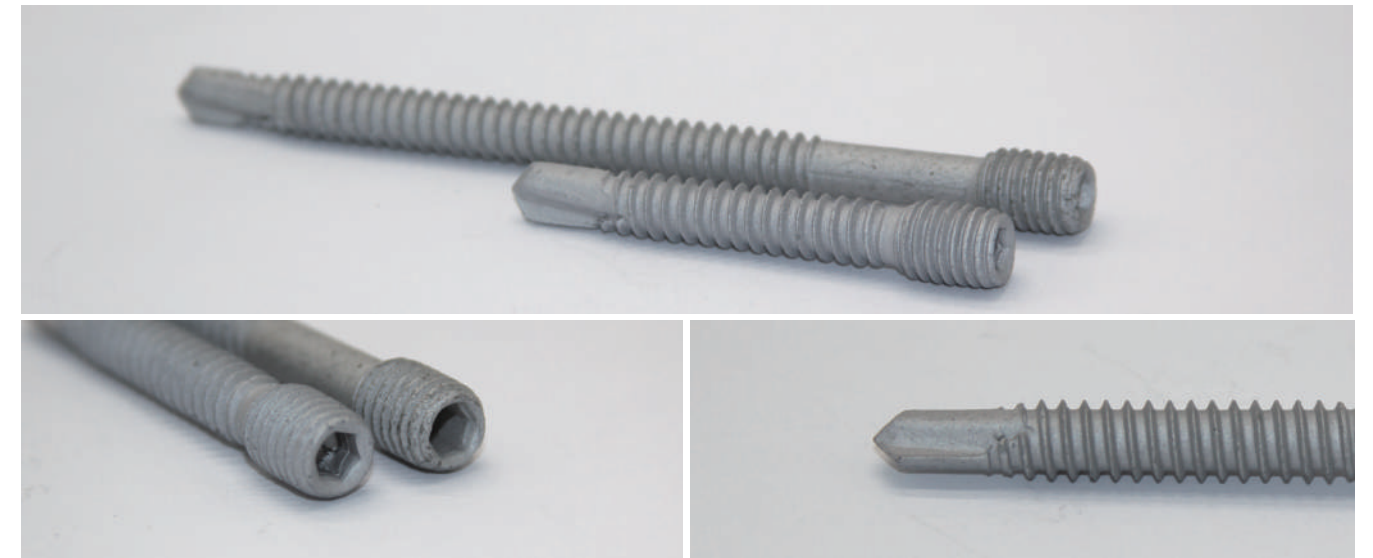
Technical Parameters //

Item	Detail
Thread Diameter	6.3mm
Screw Length	32/50/75/90/105/125/135/140/160/180/200/230mm
Drive	T30 Torx
Thread	Self-Tapping Reverse-Thread
Screw Material	Stainless Steel 304+435
Pull-out Strength (0.8 mm Steel Plate)	≥1800N
Corrosion Resistance	1500 h Neutral Salt Spray, 15 Cycles Acid Rain Test
Drilling Capacity	Steel Plate Thickness 0.63-1.25 mm
Compliance Standard	JG/T 576-2021

M8 Dual-Thread Screws

Scope of Application //

Specifically designed for connecting and securing TPO/PVC photovoltaic supports to purlins. Suitable for roofing systems with polymer waterproofing layers, such as TPO/PVC welded membranes, steel plates fully adhered with PVC/TPO, and sandwich panels.



Technical Advantages //

- ✓ Self-Drilling Tip (Lower Section): Equipped with a No. 3 drill point and coarse thread design, allowing easy penetration into purlins while delivering high pull-out resistance
- ✓ Threaded Shank (Upper Section): Features a machine-threaded design below the head, enabling direct screwing into pre-tapped support bases for significantly improved installation efficiency and secure fastening.

Technical Parameters //

Item	Detail
Thread Diameter	8/10mm
Screw Length	50/105/160/180/200/250mm
Drive	4.5 Hex Bit
Thread	Self-Tapping Coarse Thread
Screw Material	Carbon Steel
Pull-out Strength (3 mm Steel Plate)	≥4500N
Corrosion Resistance	1500 h Neutral Salt Spray, 15 Cycles Acid Rain Test
Drilling Capacity	Steel Plate Thickness 1.5-3 mm
Compliance Standard	JG/T 576-2021



IN A SINGLE-PLY ROOFING SYSTEM, EVERY COMPONENT IS CRITICAL TO THE OVERALL SAFETY AND SERVICE LIFE. WE UNDERSTAND THAT AS A KEY MECHANICAL FASTENER, THE MATERIAL SELECTION FOR SLEEVES DIRECTLY DETERMINES THE LONG-TERM RELIABILITY OF THE ENTIRE SYSTEM. THEREFORE, BY INCORPORATING ANTIOXIDANTS, TOUGHENING AGENTS, AND UV ABSORBERS INTO HIGH-QUALITY POLYPROPYLENE (PP), WE PROVIDE ENDURING PROTECTION FOR OUR SLEEVES.

WHY MODIFIED PP? THE PURSUIT OF LONG-TERM RELIABILITY

- ✔ Modified PP provides outstanding ductility, effectively resisting physical impacts from installation foot traffic, tool contact, and harsh weather, ensuring zero damage throughout the system's service life
- ✔ Even under long-term exposure to high rooftop temperatures, modified PP maintains its structural integrity without deformation or embrittlement
- ✔ The sleeve and screw assembly delivers a pull-out strength exceeding 2000 N, with composite deformation strictly controlled within 10%, ensuring wind uplift resistance of the fastening system
- ✔ As a high-performance polymer, modified PP is inherently immune to corrosive environments such as acid rain and salt spray, eliminating any risk of rust and making it perfectly compatible with metal components

EXPLORE NOW: DETAILED MODELS AND SPECIFICATIONS ACROSS OUR SLEEVE SERIES

FC Sleeves

Flexible Roofing Sleeve Fasteners

Scope of Application //

Specifically designed for the mechanical fastening of rock wool insulation layers and TPO/PVC waterproof membranes in single-ply roofing systems.



Technical Advantages //

- ✔ Forms a telescopic fastener unit with SW screws, preventing screw tips from penetrating the PVC/TPO waterproofing membrane
- ✔ Dome-Shaped Disc Design: Mushroom-shaped disc distributes stress evenly and provides enhanced rigidity to resist bending
- ✔ Eight-Grip Claw Structure: Eight claws firmly engage with the membrane's reinforcement layer, significantly increasing friction and preventing slippage
- ✔ Universal Membrane & Insulation Fixing: Compatible with SW screws for both membrane and insulation attachment, offering flexible on-site configuration
- ✔ The sleeve-screw combination effectively blocks heat transfer through metal screws, preventing condensation formation

Technical Parameters //

ITEM	DETAIL
Disc Diameter	47.5mm
Sleeve Diameter	15mm
Sleeve Length	35/45/55/65/85/105/115/135/165/180mm
Sleeve Material	Modified PP (Polypropylene)
Design Load	600N
Compliance Standard	JG/T 576-2021
Application Scenario	For fixing rock wool insulation layers and P-class waterproof membranes

FM Sleeves

Flexible Roofing Sleeve Fasteners

Scope of Application //

Specifically designed for the mechanical fastening of soft insulation layers and TPO/PVC waterproof membranes in single-ply roofing systems.



Technical Advantages //

- ✓ Forms a telescopic fastener unit with SW screws, preventing screw tips from penetrating the PVC/TPO waterproofing membrane
- ✓ Features a thickened disc with integrated reinforcement ribs at the disc-tube junction, significantly enhancing bending resistance and overall stability
- ✓ Universal Membrane & Insulation Fixing: Compatible with SW screws for both membrane and insulation attachment, offering flexible on-site configuration
- ✓ The sleeve-screw combination effectively blocks heat transfer through metal screws, preventing condensation formation

Technical Parameters //

ITEM	DETAIL
Disc Diameter	82*40mm
Sleeve Diameter	15mm
Sleeve Length	35/65mm
Sleeve Material	Modified PP (Polypropylene)
Assembly Pull-out Strength	≥2000N
Design Load	600N
Compliance Standard	JG/T 576-2021
Application Scenario	For fixing rock wool insulation layers and P-class PVC/TPO waterproof membranes

FT Sleeves

Flexible Roofing Sleeve Fasteners

Scope of Application //

Specifically designed for the mechanical fastening of soft insulation layers and TPO/PVC waterproof membranes in single-ply roofing systems.



Technical Advantages //

- ✓ Dome-Shaped Disc Design: Mushroom-shaped disc distributes stress dispersedly and provides enhanced rigidity to resist bending
- ✓ Forms a telescopic fastener unit with SW screws, preventing screw tips from penetrating the PVC/TPO waterproofing membrane
- ✓ The sleeve-screw combination effectively blocks heat transfer through metal screws, preventing condensation formation
- ✓ Universal Membrane & Insulation Fixing: Compatible with SW screws for both membrane and insulation attachment, offering flexible on-site configuration

Technical Parameters //

ITEM	DETAIL
Disc Diameter	47.5mm
Sleeve Diameter	15mm
Sleeve Length	35/65/85/105mm
Sleeve Material	Modified PP (Polypropylene)
Assembly Pull-out Strength	≥2000N
Design Load	600N
Compliance Standard	JG/T 576-2021
Application Scenario	For fixing rock wool insulation layers and P-class waterproof membranes



SW Screws 5.5 + FT Sleeves

Scope of Application //

Designed for TPO/PVC single-ply roofing systems to secure rock wool insulation and waterproofing layers. When paired with high-strength screws, it can also be fastened directly to purlins, making it suitable for roof renovation projects.



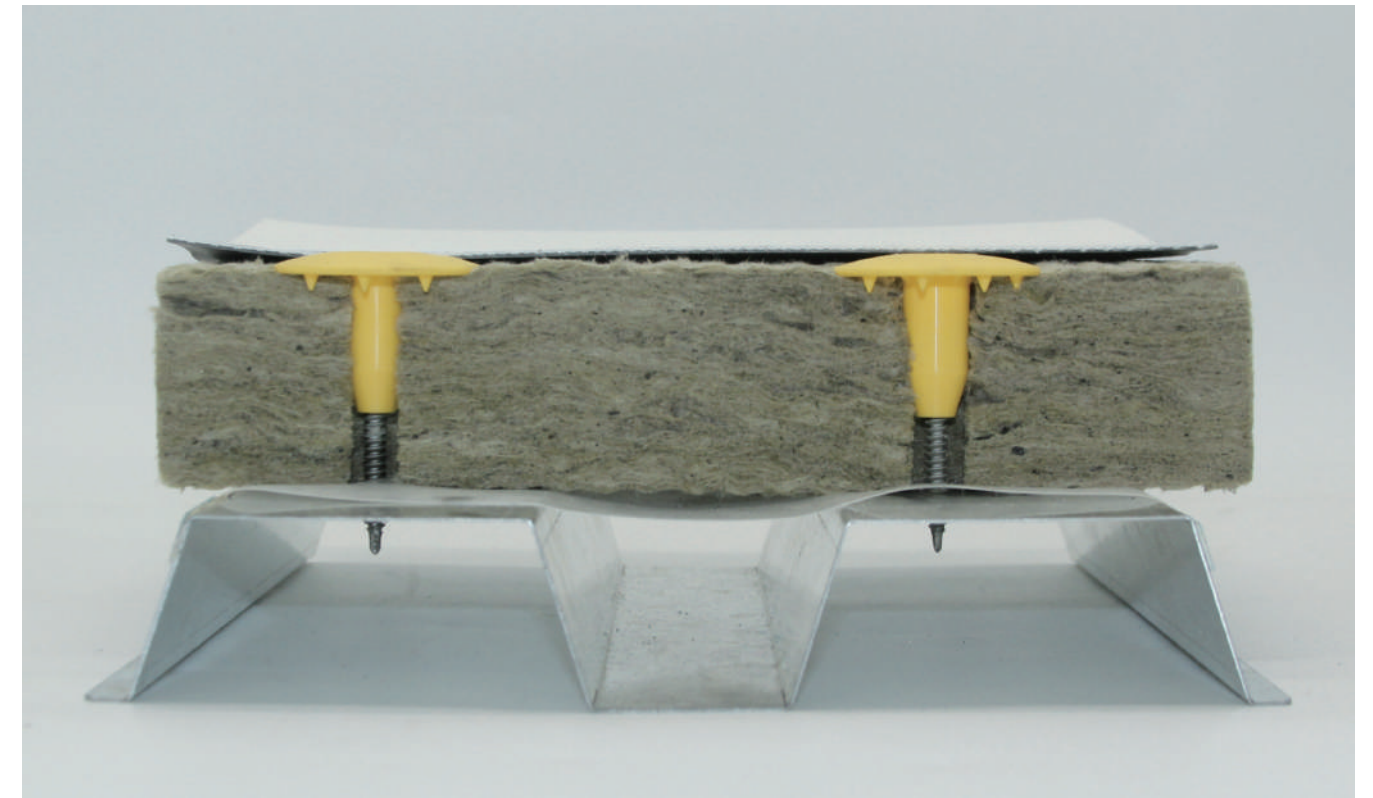
Technical Advantages //

- ✓ Pre-Assembled Design: Ready to use out of the box for faster, more efficient installation
- ✓ Round Disc Shape: Enables omni-directional placement without adjustment, accelerating installation speed
- ✓ Self-Drilling Screw: Small drill point with spaced threading reduces installation effort while ensuring high pull-out strength
- ✓ Eight-Grip Claw Design: Provides strong friction with the membrane for secure, flush fastening without hammering or kicking

Optimal Combination Guide //

Insulation Thickness	Sleeve Option	Screw Option
50mm Rock Wool	FT35mm	SW5.5*50mm
70mm Rock Wool	FT35mm	SW5.5*75mm
80mm Rock Wool	FT65mm	SW5.5*50mm
90mm Rock Wool	FT65mm	SW5.5*75mm
100mm Rock Wool	FT85mm	SW5.5*50mm
120mm Rock Wool	FT105mm	SW5.5*50mm
140mm Rock Wool	FT105mm	SW5.5*75mm

STRUCTURAL ILLUSTRATION //



Small-Hole Non-Penetrating Gasket

Scope of Application //

SUITABLE FOR SINGLE-PLY ROOFING SYSTEMS WHEN FASTENING TPO/PVC WATERPROOF MEMBRANES ON RIGID SUBSTRATES, SUCH AS CONCRETE, FIRE-RATED BOARDS, GYPSUM BOARDS, AND OTHER NON-STRONGLY ALKALINE RIGID BASES.



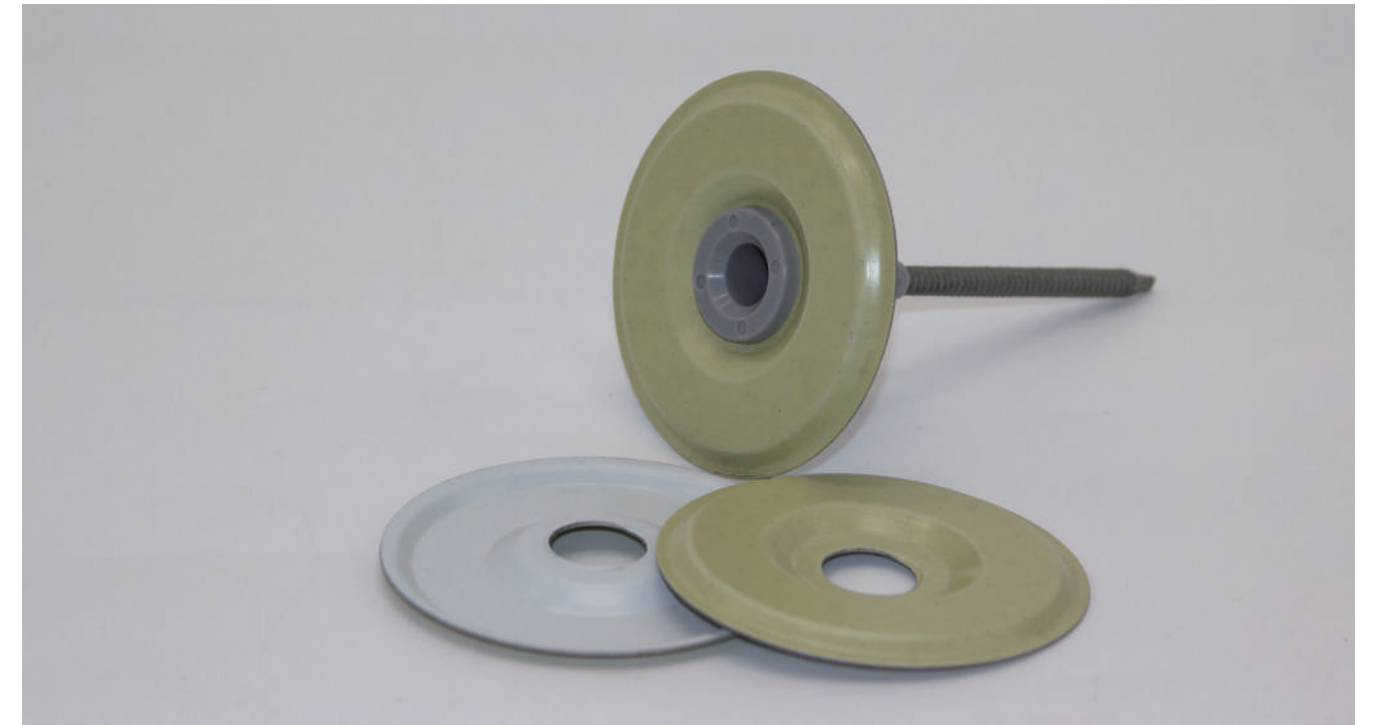
Technical Parameters //

Item	Detail
Gasket Dimensions	Φ80mm
Gasket Thickness	0.8mm
Hole Diameter	6.5mm
Gasket Base Material	150 g Aluzinc Steel Sheet
Coating	PVC/TPO
Design Load	800N
Assembly Pull-out Strength	≥2000N
Bonding Strength	≥2000N
Compliance Standard	JG/T 576-2021

Large-Hole Non-Penetrating Gasket

Scope of Application //

SUITABLE FOR SINGLE-PLY ROOFING SYSTEMS WHEN FASTENING TPO/PVC WATERPROOF MEMBRANES ON SOFT SUBSTRATES, SUCH AS ROCK WOOL INSULATION LAYERS.



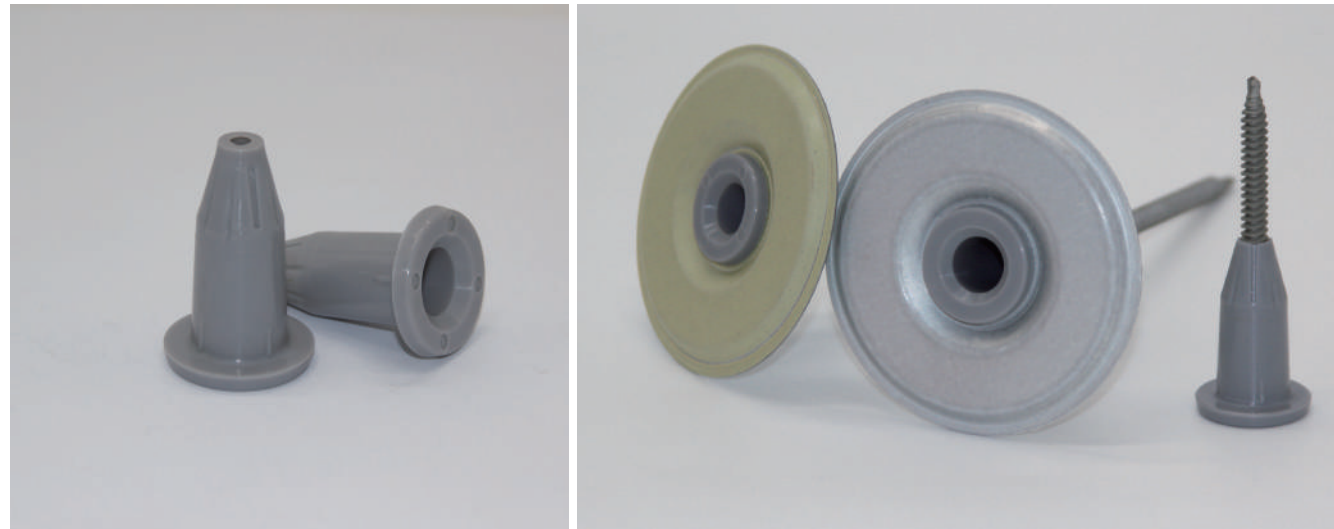
技术参数 //

Item	Detail
Gasket Dimensions	Φ80mm
Gasket Thickness	0.8mm
Hole Diameter	17mm
Gasket Base Material	150 g Aluzinc Steel Sheet
Coating	PVC/TPO
Design Load	800N
Assembly Pull-out Strength	≥2000N
Bonding Strength	≥2000N
Compliance Standard	JG/T 576-2021

Nylon Sleeve Non-Penetrating Gasket with Matching Sleeve

Scope of Application //

The nylon sleeve is specifically designed for use with large-hole non-penetrating gaskets, together forming a perforation-free fastening solution for rock wool insulation substrates in mechanical fixing systems.



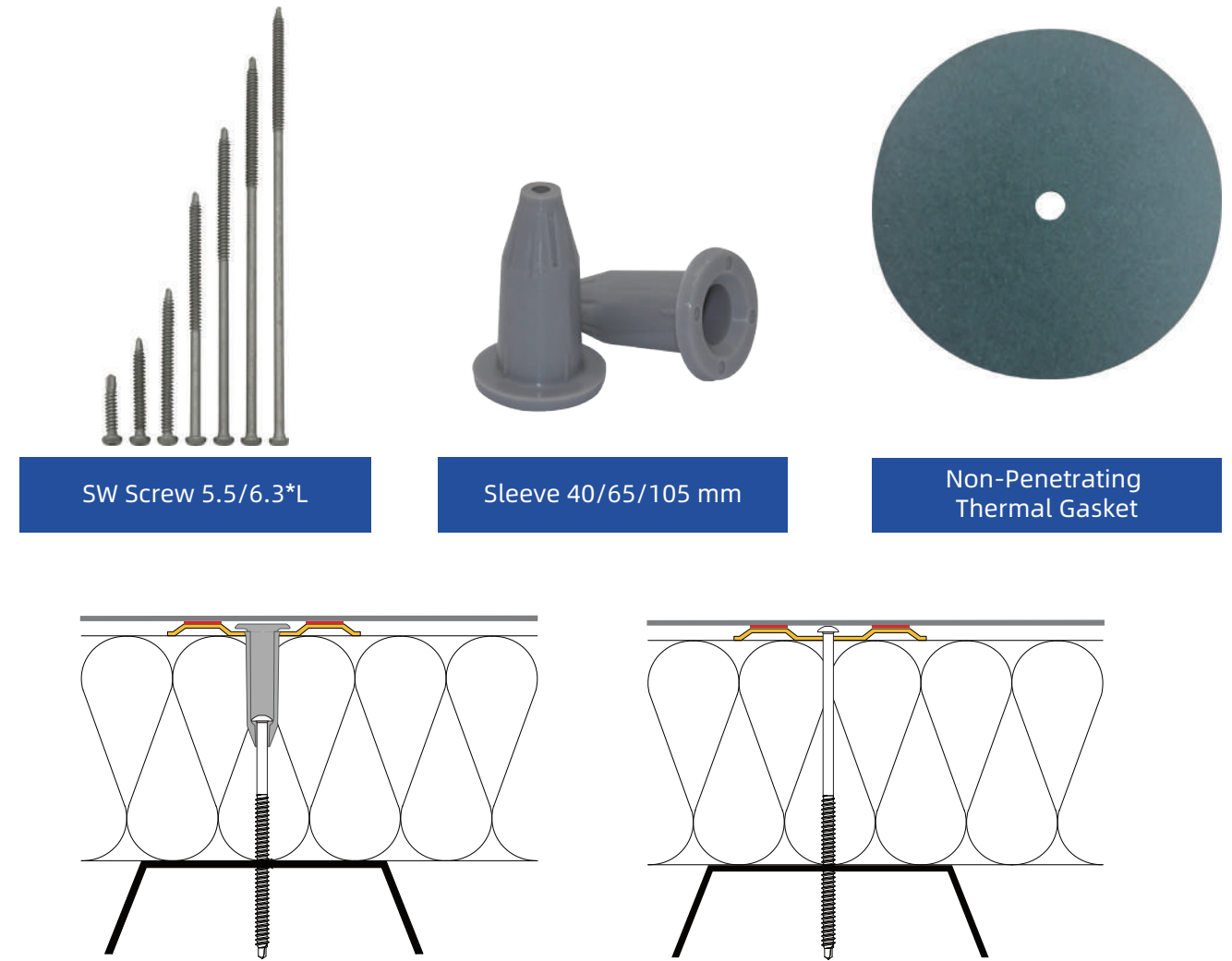
Technical Advantages //

- ✓ The nylon material effectively blocks thermal bridging while providing excellent insulation and anti-corrosion properties, ensuring tight integration with screws for enhanced system stability
- ✓ Compared to PP, nylon offers higher mechanical strength, improved heat resistance, and greater dimensional stability

Technical Parameters //

Item	Detail
Boss Diameter	26mm
Sleeve Diameter	17mm
Sleeve Length	40/65/105mm
Sleeve Material	Modified Nylon

Matching Products



System Configuration Guide //

Insulation Thickness	Rock Wool Substrate (Nylon Sleeve + Screw)	Rigid Substrate (Screw)
50mm	40 Sleeve + 50 Screw	SW5.5*75/6.3*75
60mm	40 Sleeve + 75 Screw	SW6.3*90
70mm	40 Sleeve + 75 Screw	SW6.3*90
80mm	40 Sleeve + 75 Screw / 65 Sleeve + 50 Screw	SW6.3*105/5.5*100
90mm	40 Sleeve + 90 Screw / 65 Sleeve + 75 Screw	SW6.3*125
100mm	40 Sleeve + 100 Screw / 65 Sleeve + 75 Screw	SW6.3*125
120mm	40 Sleeve + 125 Screw / 65 Sleeve + 90 Screw	SW6.3*140
150mm	40 Sleeve + 150 Screw / 65 Sleeve + 120 Screw / 105 Sleeve + 90 Screw	SW6.3*180

ELECTROMAGNETIC INDUCTION WELDER

THIS WELDER EMPLOYS ELECTROMAGNETIC INDUCTION WELDING TECHNOLOGY, SPECIFICALLY DESIGNED FOR MECHANICALLY FASTENING TPO, PVC, AND EPDM ROOFING MEMBRANES. DURING INSTALLATION, THE WASHER IS FIRST SECURED TO THE SUBSTRATE USING FASTENERS. ONCE THE MEMBRANE IS LAID OVER, THE WELDER USES INDUCTION HEATING TO FUSE THE GASKET AND MEMBRANE INTO AN INTEGRATED ASSEMBLY.

ADVANTAGES:

- ▶ PENETRATION-FREE MEMBRANE FIXING: ELIMINATES PERFORATIONS IN THE MEMBRANE
- ▶ THE WELDING PROCESS IS FULLY MANAGED BY THE EQUIPMENT
- ▶ SIMPLE OPERATION WITH CONSISTENTLY STRONG AND DURABLE ADHESION
- ▶ DEMONSTRATES SUPERIOR PERFORMANCE ON PIR INSULATION SUBSTRATES
- ▶ HIGH WIND UPLIFT RESISTANCE: MEETS STANDARD SPECIFICATIONS AND REDUCES FASTENER USAGE BY 25-50% COMPARED TO TRADITIONAL MECHANICAL FASTENING METHODS

Item	Detail
Input Voltage	230V
Frequency	50Hz
Power	4200 W / Adjustable
Operating Frequency	50Hz
Effective Welding Area	≥Φ75mm
Overall Dimensions	790*340*160mm
Machine Weight	9.5Kg



PEEL TEST DEMONSTRATION: NON-PENETRATING GASKET WELDING



Application Demonstration //

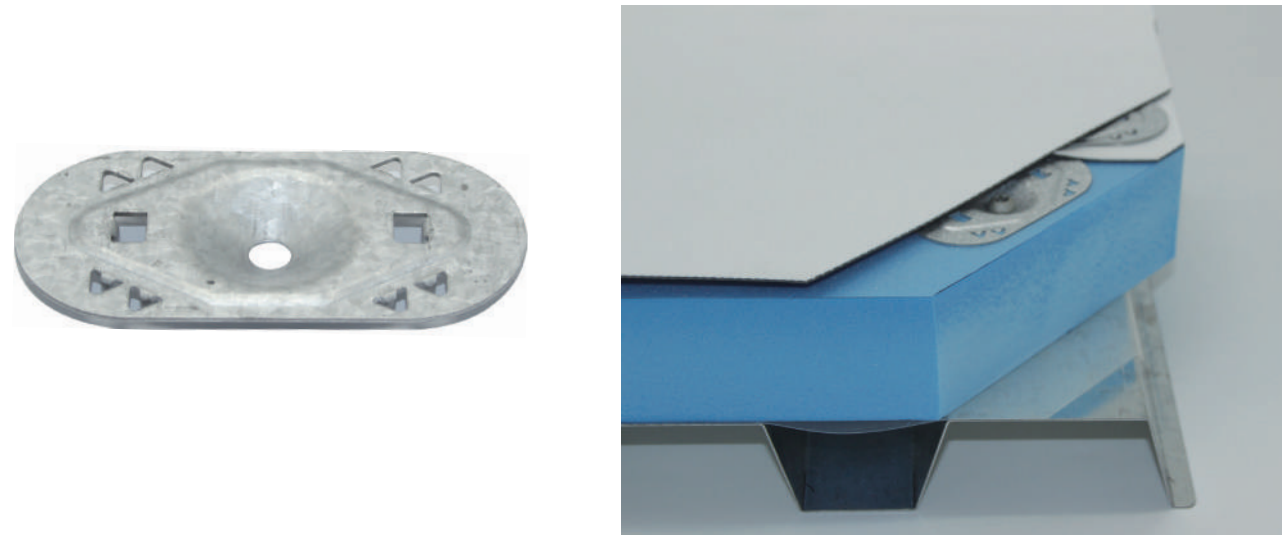


Type K Gasket

Rigid Insulation Fixing Gasket

Scope of Application //

Used for fastening various single-ply roofing membranes including TPO, PVC, SBS, and KEE, installed over common insulation layers such as XPS, PIR, or EPS. A recommended membrane overlap width of 120 mm should be maintained.



Technical Advantages //

- ✓ Prevents Membrane Tearing: The gasket design evenly distributes pressure, preventing the membrane from being torn by the screw shank under high wind loads
- ✓ Enhanced Fastening Load with Toothed Design: The teeth on the gasket base securely grip the membrane surface, maximizing pull-out resistance and wind uplift performance

Technical Parameters //

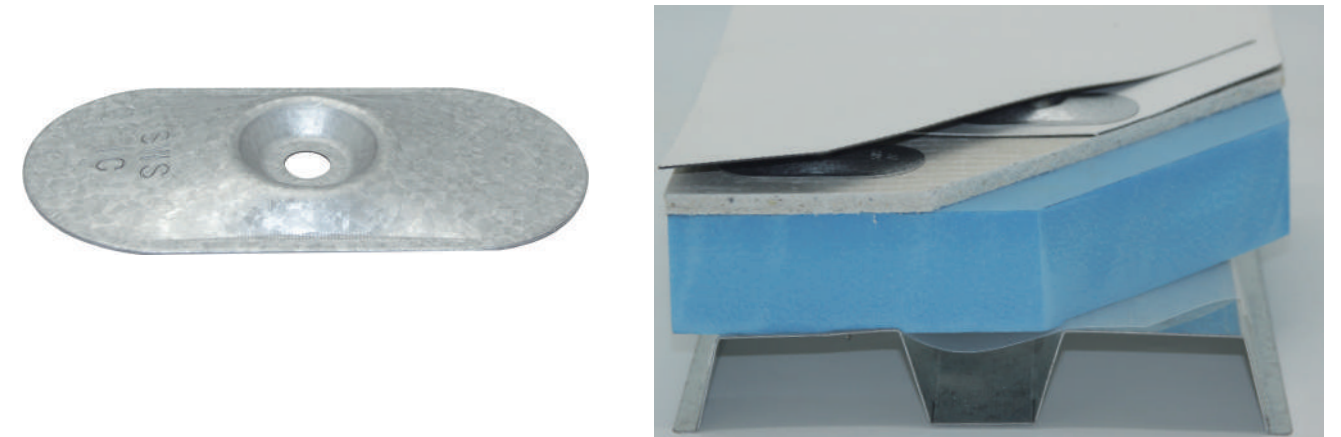
Item	Detail
Gasket Dimensions	82*40mm
Gasket Thickness	1mm
Hole Diameter	6.5mm
Gasket Material	150 g Aluzinc Steel Sheet
Design Load	800N
Pull-out Strength	≥2000N
Compliance Standard	JG/T 576-2021
Application Scenario	Universal fastening for membranes/insulation

Type C Gasket

Rigid Substrate Fixing Gasket

Scope of Application //

Suitable for fastening TPO/PVC waterproof membranes on rigid substrates such as concrete, cement fiberboard, and gypsum board. Not applicable for glass-magnesium panels or strongly alkaline rigid substrates.



Technical Advantages //

- ✓ Hollow Reinforced Structure: Provides higher strength, ensuring the gasket remains deformation-free during fastening and under load, thereby offering reliable support
- ✓ Recessed Screw Hole Design: Allows the screw head to sit below the surface, effectively preventing abrasion damage to the overlying membrane
- ✓ Flat Peripheral Edge: Ensures tight compaction of the membrane and increases friction, significantly enhancing the system's wind uplift resistance

Technical Parameters //

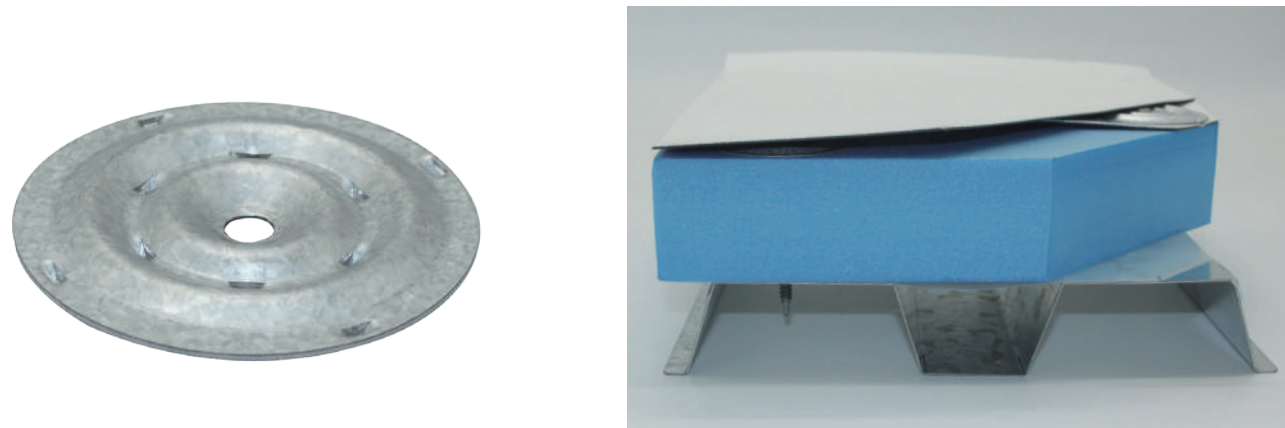
Item	Detail
Gasket Dimensions	82*40mm
Gasket Thickness	1mm
Hole Diameter	6mm
Gasket Material	150 g Aluzinc Steel Sheet
Design Load	800N
Pull-out Strength	≥1800N
Compliance Standard	JG/T 576-2021
Application Scenario	Universal fastening for membranes/insulation

D60 Claw Gasket

Rigid Insulation Fixing Gasket

Scope of Application //

Used for fastening various single-ply roofing membranes including TPO, PVC, SBS, and KEE, installed over common insulation layers such as XPS, PIR, or EPS. A recommended membrane overlap width of 150 mm should be maintained.



Technical Advantages //

- ✓ Specifically designed for membranes over 2.4 meters in width, the 60 mm diameter provides a larger fixing area, enhancing pressure distribution and wind uplift resistance
- ✓ The toothed base design firmly grips the membrane's reinforcement layer, significantly improving pull-out strength and wind uplift performance to ensure system stability
- ✓ The circular configuration ensures even stress distribution and facilitates easy installation, delivering an efficient and reliable fastening solution for wide membrane systems

Technical Parameters //

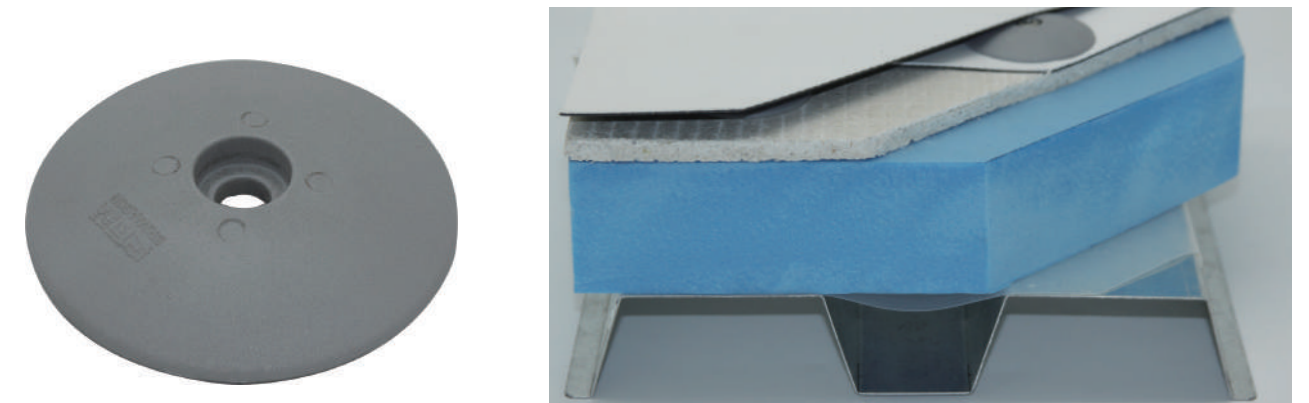
Item	Detail
Gasket Dimensions	Φ 60mm
Gasket Thickness	0.8/1 mm
Hole Diameter	6.5mm
Gasket Material	150 g Aluzinc Steel Sheet
Design Load	800N
Pull-out Strength	≥2000N
Compliance Standard	JG/T 576-2021
Application Scenario	Waterproofing membranes with a width ≥ 2.4 m

D50 Nylon Gasket

Alkaline-Resistant Rigid Substrate Fixing Gasket

Scope of Application //

Used for fastening various single-ply roofing membranes including TPO, PVC, SBS, and KEE, installed over common insulation layers such as XPS, PIR, or EPS. A recommended membrane overlap width of 150 mm should be maintained.



Technical Advantages //

- ✓ Excellent low-temperature resistance
- ✓ Modified nylon material with superior toughness
- ✓ Maintains integrity under long-term high-temperature exposure without embrittlement
- ✓ Manufactured using Lati Rethylum nylon raw material from Italy

Technical Parameters //

Item	Detail
Gasket Dimensions	Φ50mm
Hole Diameter	6.5mm
Gasket Material	Modified Nylon
Design Load	800N
Pull-out Strength	≥1800N
Compliance Standard	JG/T 576-2021
Application Scenario	Universal fastening for membranes/insulation

D40 Gasket

Rigid Substrate Fixing Gasket

Suitable for fastening TPO/PVC waterproof membranes on rigid substrates such as concrete, cement fiberboard, and gypsum board. Not applicable for glass-magnesium panels or strongly alkaline rigid substrates.



- Cost-effective gasket specifically engineered for rigid substrates
- Peripheral raised points on the base increase friction with the substrate, significantly enhancing pull-out strength and wind uplift resistance
- Circular design ensures even force distribution and facilitates easy installation

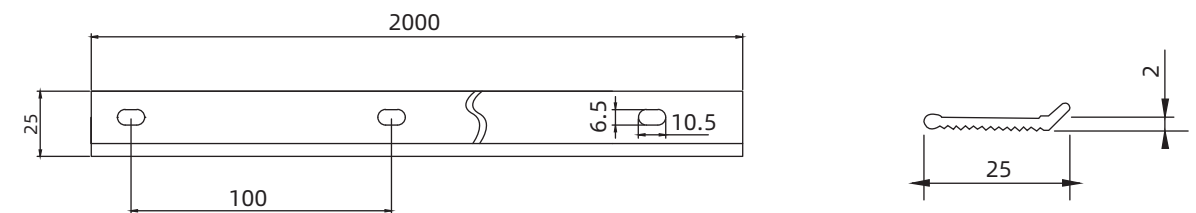
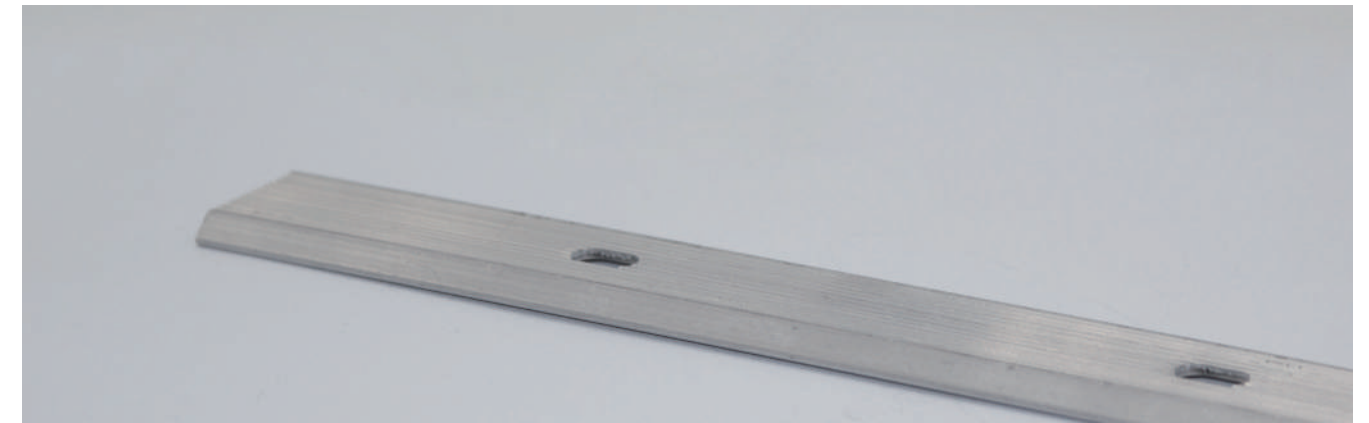
Technical Parameters //

Item	Detail
垫片尺寸	Φ40mm
垫片厚度	1mm
孔径	6.5mm
垫片材质	150g镀锌钢板
设计荷载	600N
抗拉拔力	≥2000N
执行标准	JG/T 576-2021
使用场景	适用于卷材通用固定件

Type III Edge Trim Batten

Scope of Application //

SUITABLE FOR FIXING MEMBRANE TERMINATIONS AND FLASHINGS AT LOCATIONS SUCH AS PARAPETS, SKYLIGHTS, VENTILATION BASES, AND EAVES.



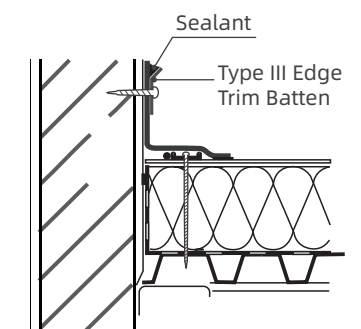
(Unit:mm)

Technical Advantages //

- Features a single-sided ribbed design, with the ribbed surface facing inward to contact the membrane. This significantly enhances frictional resistance, effectively addressing the common issues of slipping and bulging associated with traditional smooth battens. The ribbed structure simultaneously increases the batten's own rigidity, ensuring more secure fastening at water-facing terminations

Technical Parameters //

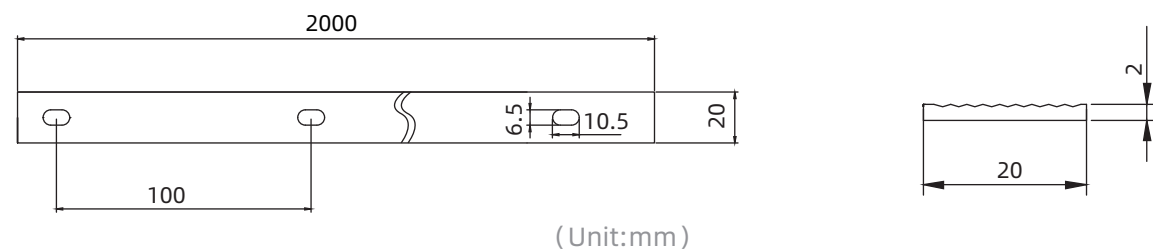
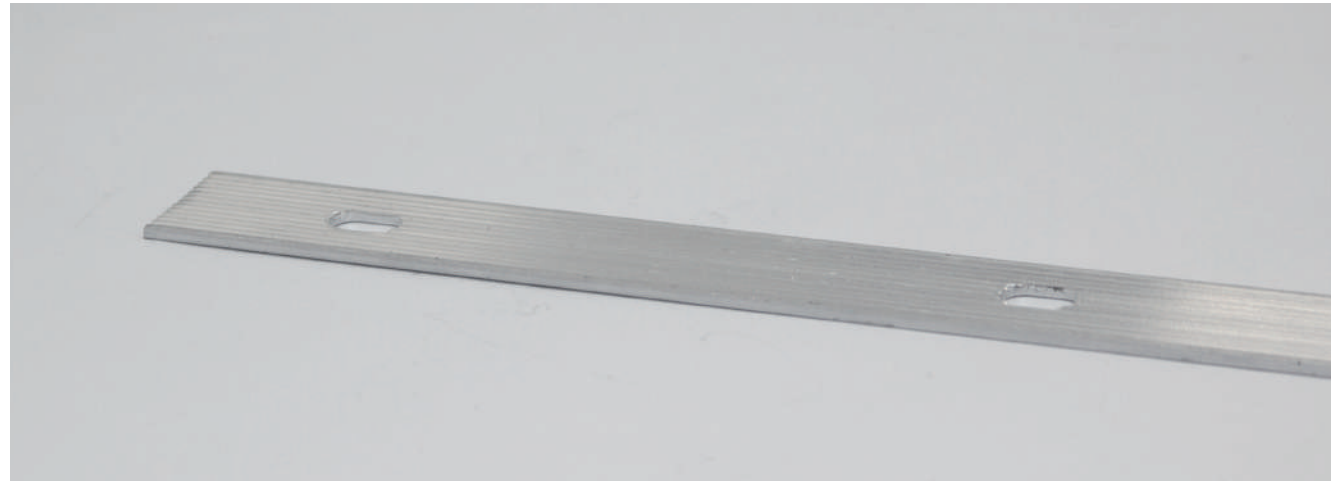
Item	DETAIL
Material	6063 Aluminum Alloy
Thickness	2mm
Length	2m
Width	25mm
Hole Diameter	6.5*10.5mm
Hole Spacing	100mm



Type II Edge Trim Batten

Scope of Application //

SUITABLE FOR FIXING MEMBRANE TERMINATIONS AND FLASHINGS AT LOCATIONS SUCH AS PARAPETS, SKYLIGHTS, VENTILATION BASES, AND EAVES.

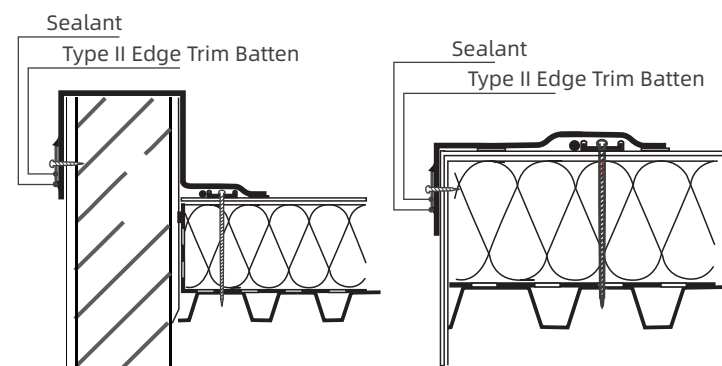


Technical Advantages //

- ✓ Features a single-sided ribbed design, with the ribbed surface facing inward to contact the membrane. This significantly enhances frictional resistance, effectively addressing the common issues of slipping and bulging associated with traditional smooth battens. The ribbed configuration concurrently strengthens the batten's own stiffness, ensuring more secure and durable edge fastening

Technical Parameters //

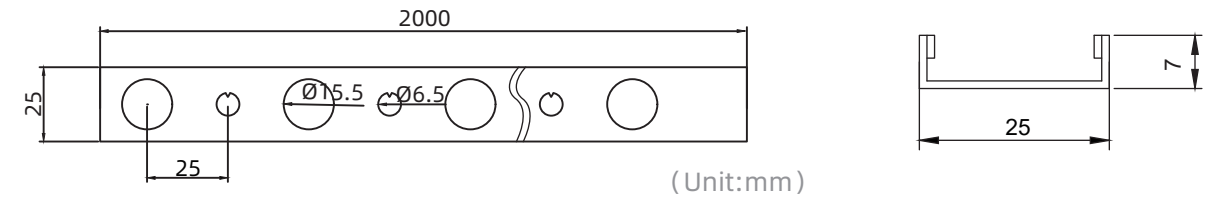
Item	Detail
Material	6063 Aluminum Alloy
Thickness	2mm
Length	2m
Width	20mm
Hole Diameter	6.5*10.5mm
Hole Spacing	100mm



U-Batten with Staggered Hole Pattern

Scope of Application //

SUITABLE FOR REINFORCED PERIMETER FASTENING AROUND OPENINGS LARGER THAN 500 MM IN PVC/TPO MEMBRANE SYSTEMS, INCLUDING PARAPET BASES, GUTTER CORNERS, ROOF RIDGES, SKYLIGHT PERIMETERS, AND EQUIPMENT CURBS.



Technical Advantages //

- ✓ The staggered hole design allows flexible use of either screws or sleeves, adapting to varying site conditions and fastening requirements
- ✓ For insulation layers exceeding 150 mm, pairing with FC sleeves and SW screws reduces costs while mitigating condensation risks
- ✓ At vulnerable locations like ridges and expansion joints, the sleeve-screw combination allows for thermal movement, minimizing membrane puncture risks

Technical Parameters //

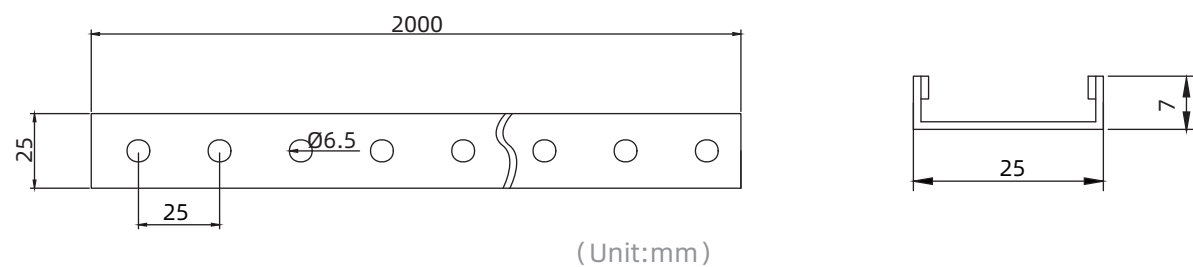
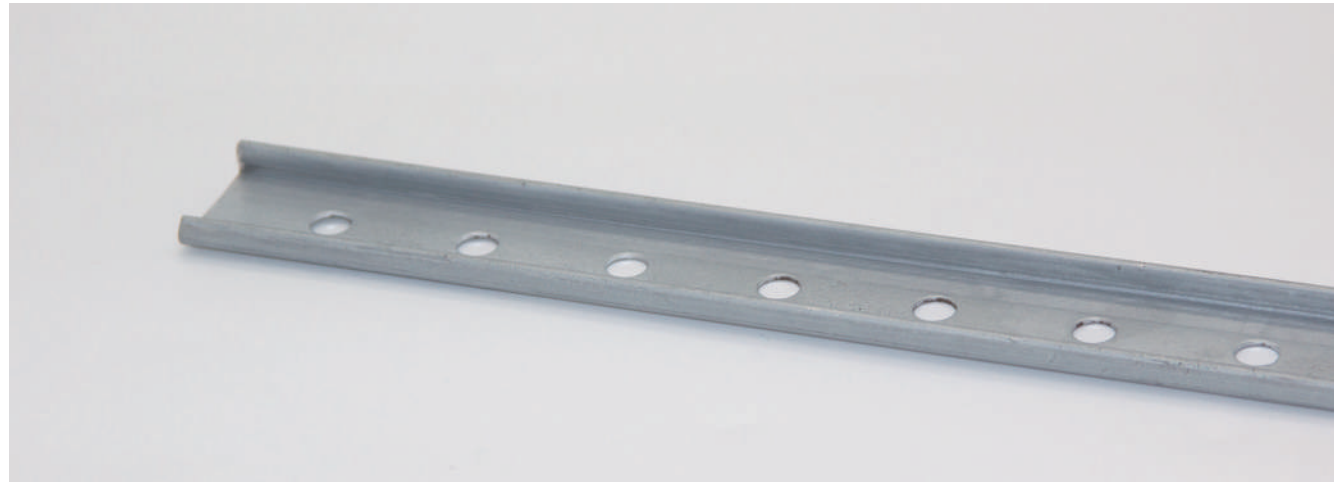
Item	Detail
Material	Galvanized Steel Sheet
Material Thickness	1mm
Length	2m
Width	25mm
Height	7mm
Hole Diameter	6.5/15.5mm
Hole Spacing	25mm



U-Batten with Uniform Holes

Scope of Application //

SUITABLE FOR REINFORCED PERIMETER FASTENING AROUND OPENINGS LARGER THAN 500 MM IN PVC/TPO MEMBRANE SYSTEMS, INCLUDING PARAPET BASES, GUTTER CORNERS, ROOF RIDGES, SKYLIGHTS, AND EQUIPMENT CURBS.

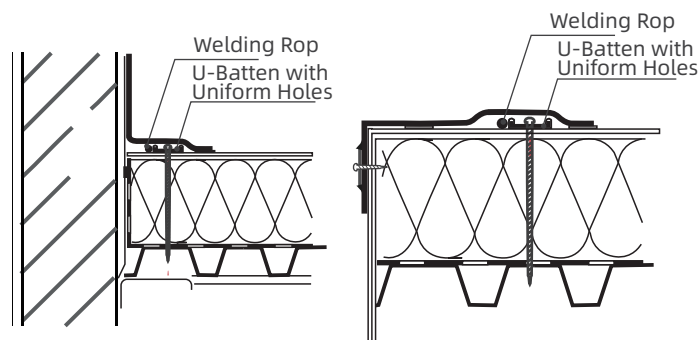


Technical Advantages //

- ✓ The 25 mm hole spacing design of the U-batten with uniform holes allows flexible alignment with steel deck corrugations, enabling the use of shorter screws and reducing fastening material costs

Technical Parameters //

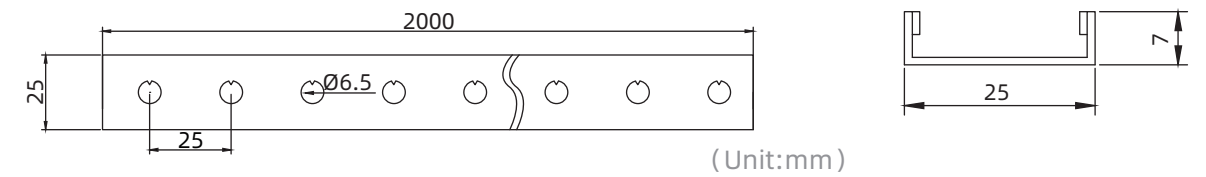
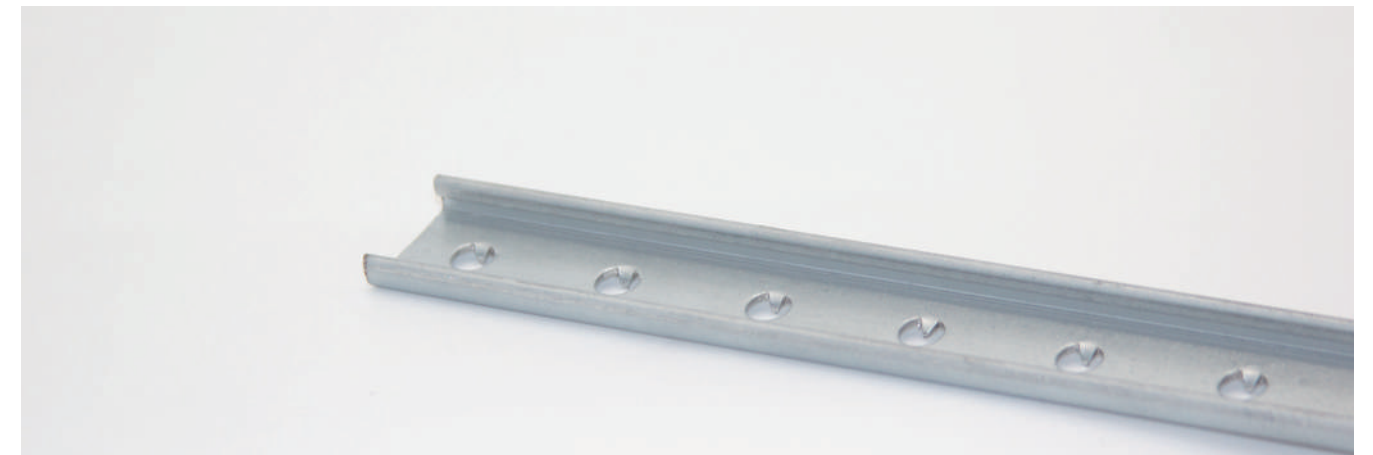
Item	Detail
Material	Galvanized Steel Sheet
Material Thickness	1mm
Length	2m
Width	25mm
Height	7mm
Hole Diameter	Φ6.5mm
Hole Spacing	25mm



U-Batten with Claws

Scope of Application //

SUITABLE FOR REINFORCED PERIMETER FASTENING AROUND OPENINGS LARGER THAN 500 MM IN PVC/TPO MEMBRANE SYSTEMS, INCLUDING PARAPET BASES, GUTTER CORNERS, ROOF RIDGES, SKYLIGHT PERIMETERS, AND EQUIPMENT CURBS.

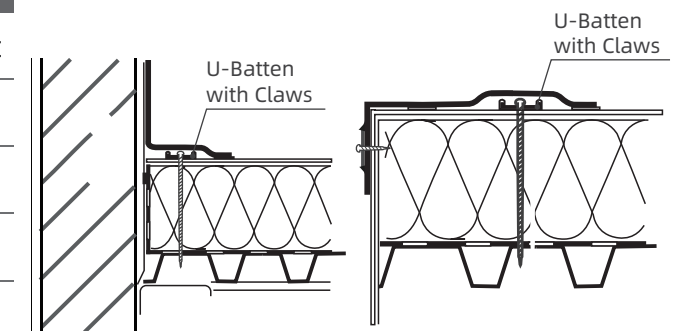


Technical Advantages //

- ✓ THE UNIQUE TRIANGULAR BARBED CLAWS PENETRATE DIRECTLY INTO THE REINFORCEMENT LAYER OF PVC/TPO MEMBRANES, CREATING A SECURE MECHANICAL ANCHOR THAT ENABLES LINEAR LOAD TRANSFER WITHOUT WELDING CORDS. THIS DESIGN ELIMINATES THE WELDING PROCESS AND ASSOCIATED RISKS OF WEAK WELDS OR DISPLACEMENT, WHILE PROVIDING PULL-OUT STRENGTH FAR EXCEEDING THAT OF WELDED CONNECTIONS, SIGNIFICANTLY IMPROVING SYSTEM RELIABILITY UNDER WIND LOADS

Technical Parameters //

Item	Detail
Material	Galvanized Steel Sheet
Material Thickness	1mm
Length	2m
Width	25mm
Height	7mm
Hole Diameter	Φ6.5mm
Hole Spacing	25mm



Load Distribution Ropes

Scope of Application //

THE WELDING ROPE IS INTEGRATED WITH THE WATERPROOF MEMBRANE ALONG THE EDGE OF THE U-BATTEN THROUGH WELDING, TRANSFORMING THE POINT LOADS FROM SCREWS ON THE U-BATTEN INTO LINEAR LOADS. THIS CREATES A REINFORCED EDGE FIXING SYSTEM THAT RESISTS MEMBRANE SHRINKAGE AND WIND UPLIFT FORCES.



▲ PVC Welding Rope



▲ TPO Welding Rope

Technical Parameters //

Item	Detail
Material	PVC/TPO
Diameter	4mm
Length	100 m/roll
Elongation at Break	PVC≥250% TPO≥400%
Tensile Strength	PVC≥10MP TPO≥12MP
Color	Gray / White

Butyl Tape

Scope of Application //

THIS PRODUCT, MANUFACTURED FROM HIGH-QUALITY BUTYL RUBBER, IS SPECIFICALLY DESIGNED FOR BONDING AND SEALING VAPOR BARRIERS IN SINGLE-PLY ROOFING SYSTEMS. ITS EXCELLENT ELASTICITY AND AGING RESISTANCE EFFECTIVELY PREVENT MOISTURE PENETRATION AND CONDENSATION WITHIN THE ROOF SYSTEM, PROVIDING DURABLE AND RELIABLE PROTECTION.



Technical Parameters //

Item	Detail
Material	Butyl Rubber
Thickness	1mm
Width	10mm
Size	20 m/roll

02 Prefabs

IN THE FIELD OF BUILDING WATERPROOFING, SUCCESS HINGES ON ATTENTION TO DETAIL. AT SHIWANSEN, WE ARE CONVINCED THAT ONLY PREMIUM MATERIALS CAN DELIVER TRULY DEPENDABLE SYSTEMS.

THAT IS WHY OUR FULL RANGE OF PREFABS USES HIGH-QUALITY THERMOPLASTIC POLYOLEFIN ELASTOMER FROM LYONDELLBASELL AS THE CORE RAW MATERIAL. THIS ENSURES THAT EVERY STEP - FROM PELLET TO FINISHED PRODUCT - IS BUILT TO THE HIGHEST STANDARDS, OFFERING:

- ✓ Exceptional weather and aging resistance, capable of withstanding extreme climate conditions
- ✓ Superior weld compatibility, enabling strong, seamless integration with quality TPO membranes
- ✓ High elasticity and tear strength, guaranteeing long-term stability and leak-free performance at critical details
- ✓ Eco-friendly and non-toxic, 100% recyclable, aligning with green building trends

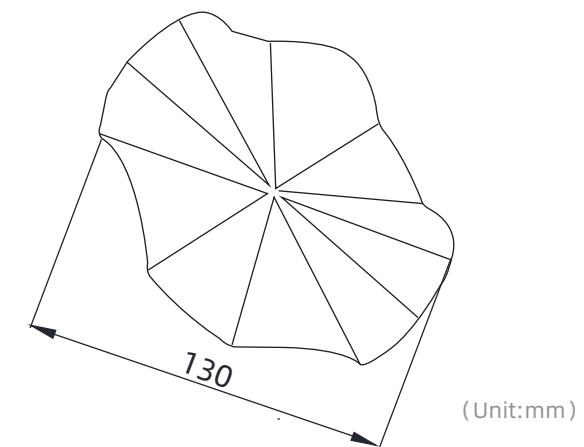
ENHANCED BY LYONDELLBASELL ELASTOMERS, EVERY INJECTION-MOLDED PREFAB - WHETHER INSIDE/OUTSIDE CORNERS, PIPE PENETRATIONS, OR T-CODE SEALS - IS NO LONGER JUST AN ACCESSORY, BUT A RELIABLE EXTENSION OF THE WATERPROOFING SYSTEM'S SERVICE LIFE

EXPLORE NOW: DETAILED MODELS AND SPECIFICATIONS ACROSS OUR PREFAB SERIES

Concrete Roof Outside Corner Prefab

Scope of Application //

Suitable for patching arc-shaped outside corners on concrete roofs with PVC/TPO membranes.



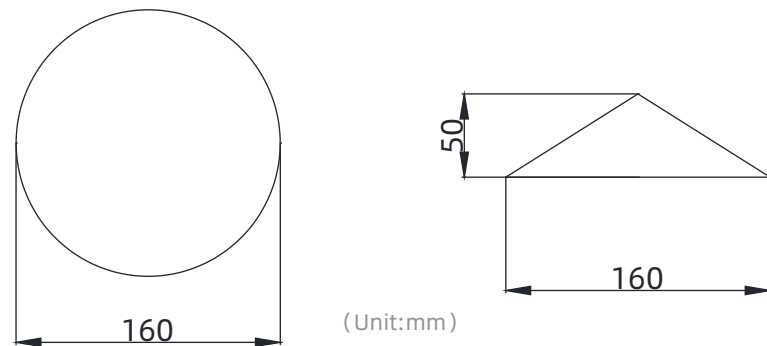
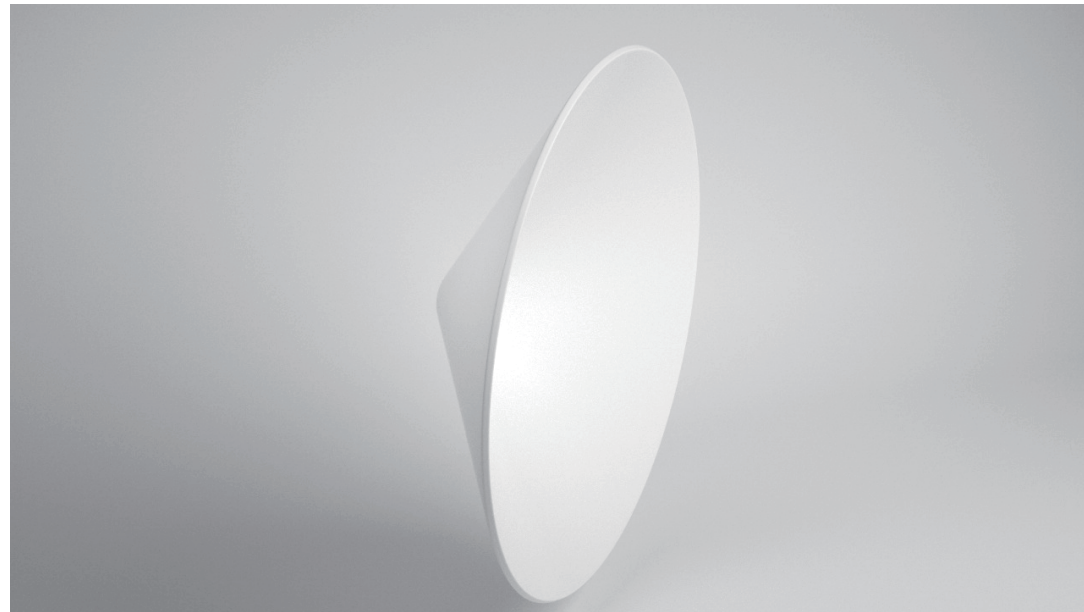
Technical Parameters //

Item	Detail
Material	TPO/PVC
Thickness	1.5mm
Diameter	130mm
Packaging	10 pcs/pack

Concrete Roof Inside Corner Prefab

Scope of Application //

Suitable for patching arc-shaped inside corners on concrete roofs with PVC/TPO membranes.



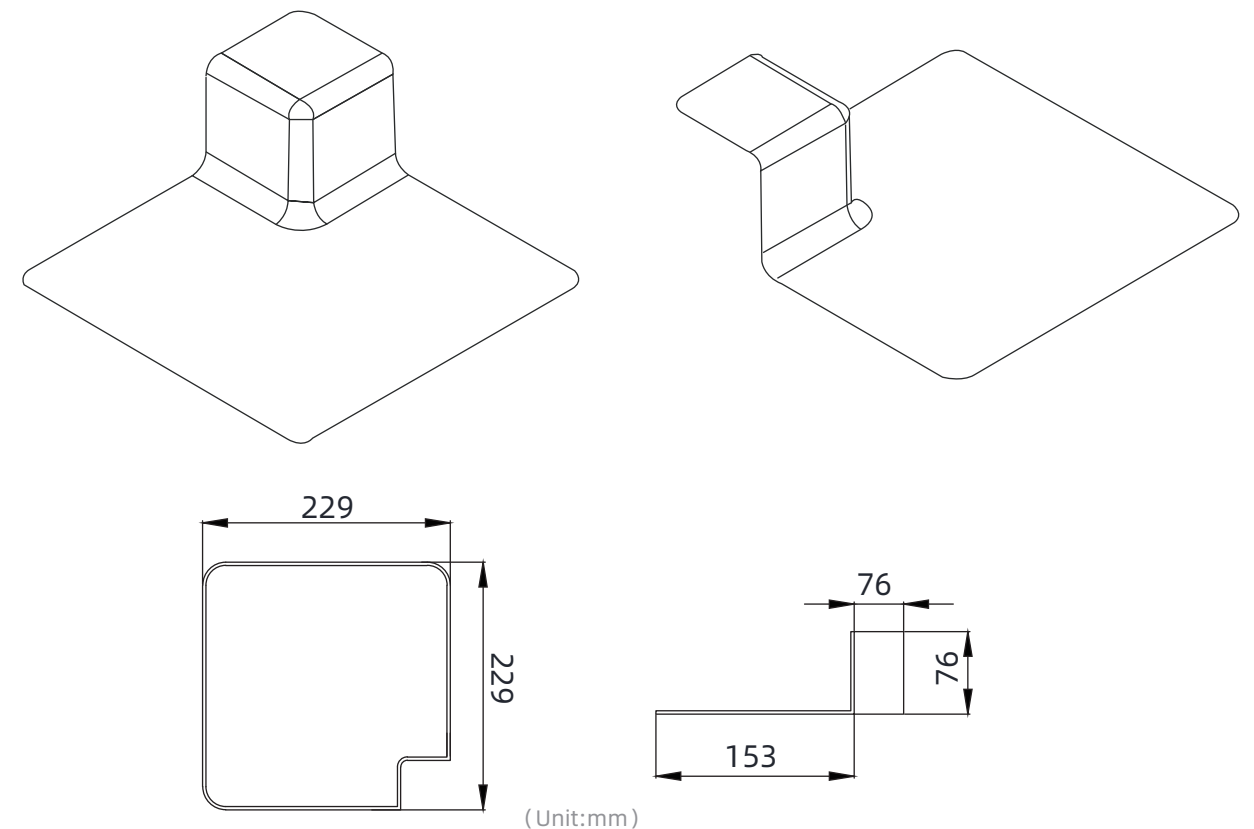
Technical Parameters //

Item	Detail
Material	TPO/PVC
Thickness	1.5mm
Height	50mm
Opening Diameter	160mm
Packaging	10 pcs/pack

Single-Ply Roofing Inside/Outside Corner Prefabs

Scope of Application //

Suitable for patching both inside and outside corners on single-ply roofing systems with TPO/PVC membranes.



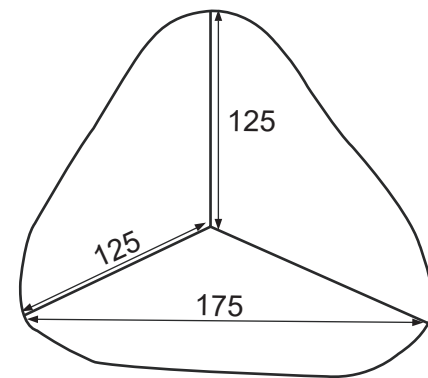
Technical Parameters //

Item	Detail
Material	TPO/PVC
Thickness	1.5mm
Height	76mm
Base	229*229mm
Flange Dimensions	76*76mm
Packaging	10 pcs/pack

Right-Angle Inside Corner Prefab

Scope of Application //

Suitable for patching non-radiused inside corners in single-ply roofing systems.



(Unit:mm)

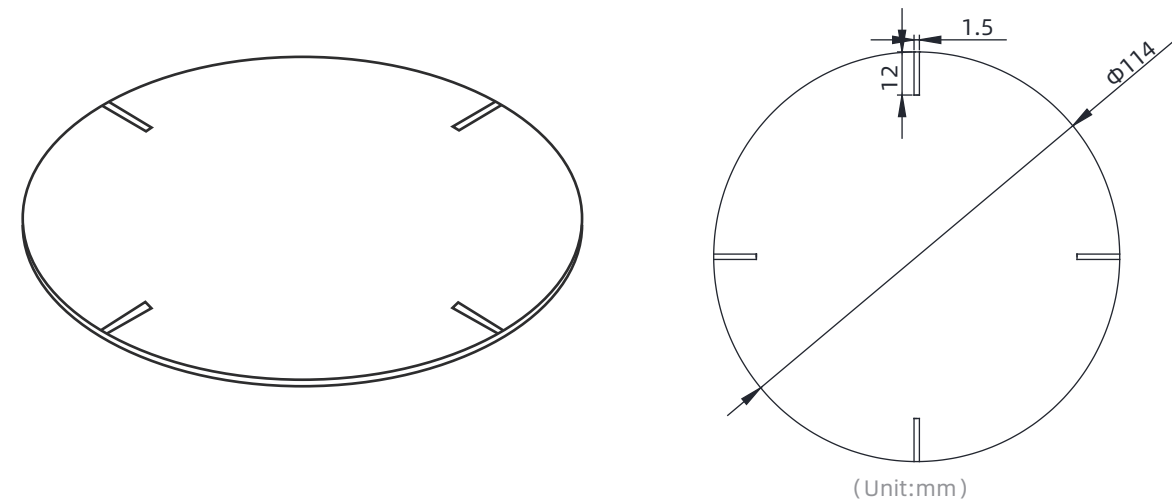
Technical Parameters //

Item	Detail
Material	TPO/PVC
Thickness	1.5mm
Length	175mm
Width	125mm
Height	125mm
Packaging	10 pcs/pack

T-Joint Patch Prefab

Scope of Application //

Used for reinforcing and sealing T-joint seams in PVC/TPO waterproofing membranes within single-ply roofing systems.



(Unit:mm)

Technical Advantages //

- ✓ Easy Installation: Injection-molded prefabs with uniform dimensions enable ready-to-use application, significantly improving installation efficiency
- ✓ Reliable Sealing: Made from homogeneous materials, they form an integral seal after hot-air welding
- ✓ Consistent Quality: Factory-standardized production ensures uniform performance, providing dependable protection for the roofing waterproofing system

Technical Parameters //

项目	详情
Material	TPO/PVC
Diameter	114mm
Thickness	1.5mm
Color	White
Elongation at Break	TPO≥500%
	PVC≥200%
Tensile Strength	TPO≥12MP
	PVC≥10MP

60 T-code Gasket Prefab

Scope of Application //

A functional component designed for aluminum-manganese-magnesium composite insulated roof systems. During installation, the prefab is first threaded onto the T-code, then its integrated membrane flange is heat-welded to the base membrane to create a reliable, long-lasting waterproofing layer. Finally, the top opening of the prefab is sealed with sealant.

This solution addresses leakage risks inherent in traditional methods, where screws penetrating the T-code rely solely on sealant - a approach prone to failure due to membrane thermal expansion/contraction, vibration, or displacement. By contrast, this prefab achieves integrated sealing with the waterproofing membrane through full-perimeter welding, fundamentally eliminating water ingress risks.

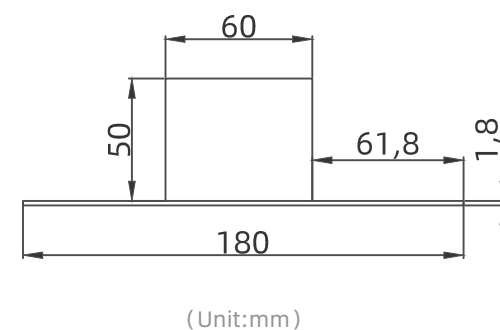


Technical Advantages //

- ✓ Removes the potential for water infiltration associated with traditional screw penetrations. The welded seal between the prefab and membrane far outlasts any sealant-based solution, matching the service life of the base material
- ✓ Secure and Reliable: With a standard 50 mm height, the prefab provides robust water resistance for the T-code, enhances wind uplift and vibration resistance, and improves overall system integrity
- ✓ Installation Efficiency: As a standardized prefab, it features uniform dimensions and consistent quality, simplifying installation steps and significantly improving efficiency and consistency
- ✓ System Compatibility: Made from the same material as TPO membranes, it welds seamlessly into the waterproofing system, ensuring the integrity and continuity of the roof waterproofing layer

Technical Parameters //

项目	详情
材质	TPO/PVC
厚度	1.8mm
高度	50mm
槽口宽度	10*60mm
底座尺寸	180*180mm



Semi-Wrap Pipe Penetration Prefab

Scope of Application //

Designed for wrapping pipe penetrations in TPO/PVC waterproofing membranes. Ideal for pipes that are too tall or have elbows, preventing direct membrane sleeving. The semi-wrap design allows two prefabs to be joined on-site around the pipe for complete sealing.



D120 SEMI-WRAP
PIPE PENETRATION PREFAB



D160 SEMI-WRAP
PIPE PENETRATION PREFAB

Technical Advantages //

- ✓ Strong Adaptability & Flexible Installation: Accommodates pipes with diameters ranging from 80 to 160 mm. Can be trimmed on-site for a snug fit around smaller pipes
- ✓ Convenient Semi-Wrap Installation: Enables quick and straightforward on-site wrapping, significantly improving overall installation efficiency
- ✓ Monolithic Structure Prevents Cracking: Injection-molded as a single piece from homogeneous material, eliminating potential weld failure and leakage risks associated with overlapping P-class membrane seams

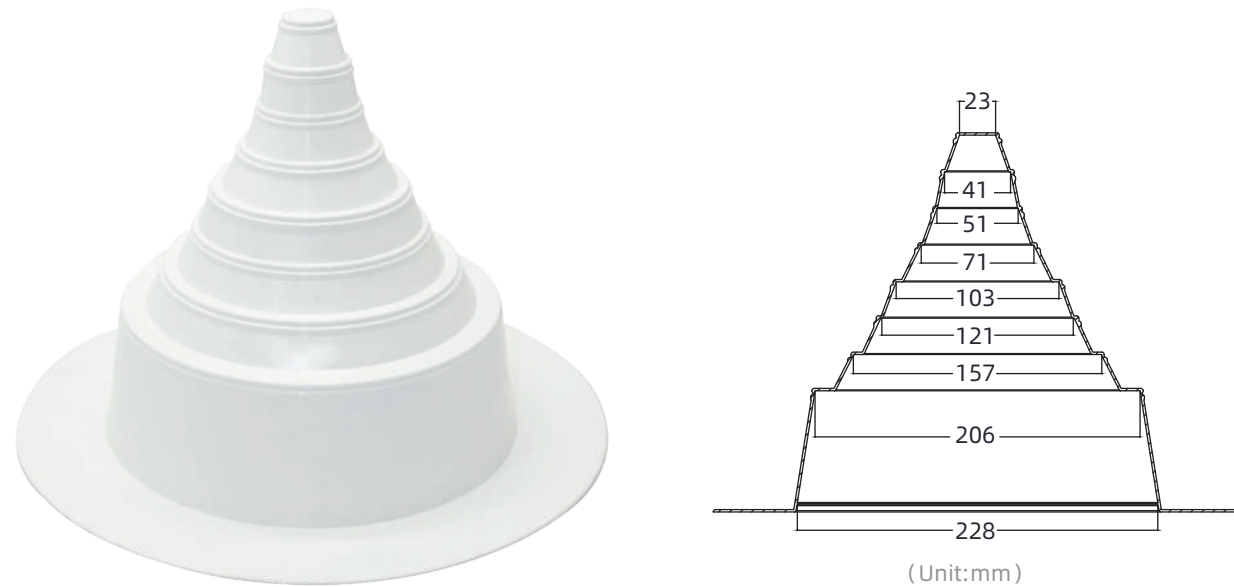
Technical Parameters //

Item	D120 Semi-Wrap Pipe Penetration	D160 Semi-Wrap Pipe Penetration
Material	TPO/PVC	TPO/PVC
Thickness	1.8mm	1.8mm
Height	260mm	260mm
Base Dimensions	284mm	325mm
Applicable Pipe Diameter	80-120mm	140-160mm

Tower-Type Prefab

Scope of Application //

An adjustable-diameter waterproofing prefab designed for pipe penetrations ranging from 23 mm to 228 mm. During installation, simply select the matching step level, cut off the portion above it, and the prefab will fit the pipe perfectly. The base flange is then heat-welded to the roof membrane to form a reliable seal.



Technical Advantages //

- ✓ A single prefab covers 8 common size ranges (D23-D228), offering exceptional versatility
- ✓ The tiered structure allows for straightforward cutting, enabling workers to quickly create an opening that matches the pipe diameter exactly
- ✓ Factory-molded as a single piece without seams, eliminating the risk of post-installation weld failure caused by improper lap joint treatment

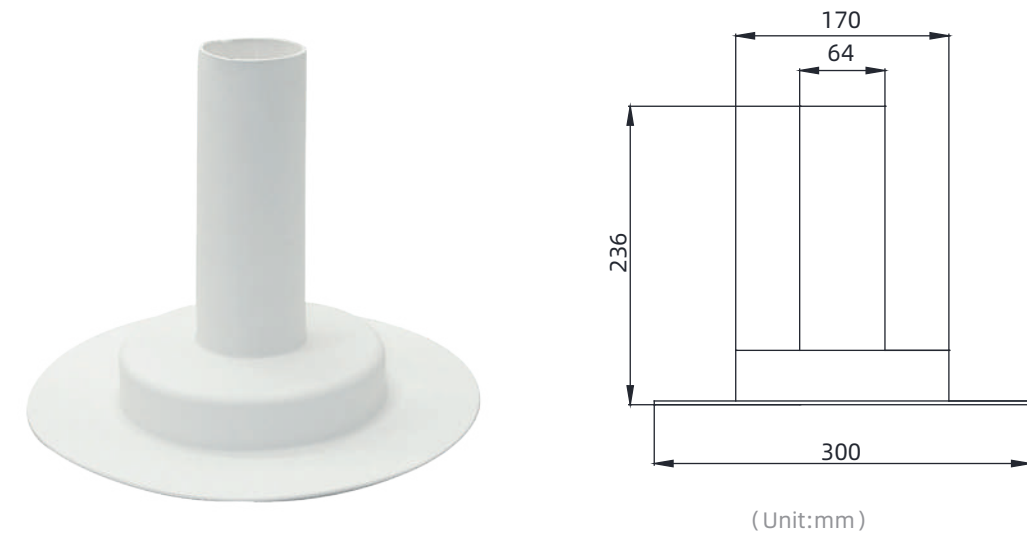
Technical Parameters //

Item	Detail
Material	TPO/PVC
Thickness	1.8mm
Height	250mm
Base Diameter	337mm

D64 Pipe Penetration Prefab

Scope of Application //

This product provides customized waterproofing solutions for complex on-site irregular penetrations, such as retrofitted bases or structural steel column footings. By accurately replicating the actual shape of the component, the prefab ensures a perfect fit with irregular structures. It can be slipped directly into place during installation, with the base flange heat-welded to the roof membrane for efficient sealing at complex details.



Technical Advantages //

- ✓ Specifically Designed for Irregular Components: Fundamentally resolves issues such as poor wrapping and wrinkling caused by shape mismatch with traditional materials
- ✓ Factory-molded as a single piece without seams, eliminating the risk of post-installation cracking caused by improper lap joint treatment

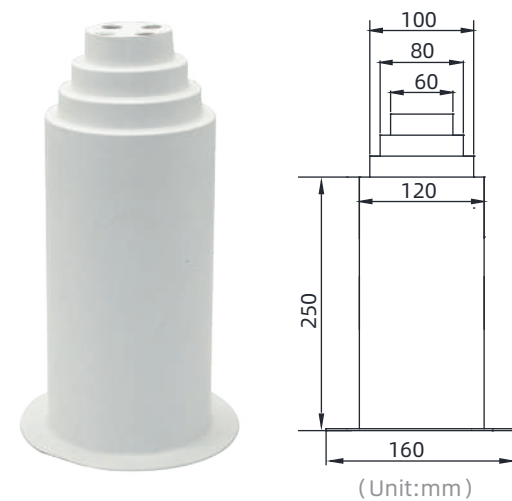
Technical Parameters //

Item	Detail
Material	TPO/PVC
Thickness	1.8mm
Height	236mm
Top Opening Diameter	64mm
Base Diameter	300mm

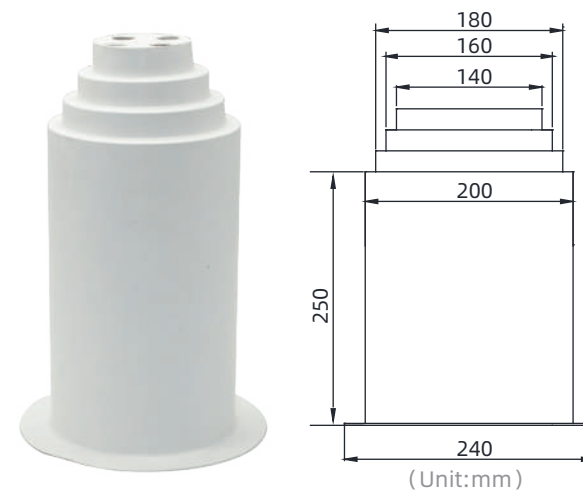
Adjustable-Diameter Pipe Penetration Prefab

Scope of Application //

This adjustable-diameter prefab is available in multiple specifications such as D60-D120 and D140-D200. The wall height at its maximum diameter complies with the national standard requiring a 250 mm flashing height, allowing direct application to pipes of corresponding sizes.



D60-120 Pipe Penetration Prefab



D140-200 Pipe Penetration Prefab

Technical Advantages //

- ✓ The product is manufactured to ensure a 250 mm effective flashing height at the maximum diameter, meeting national standards
- ✓ The tiered structure allows for straightforward cutting, enabling on-site workers to quickly create an opening that matches the pipe diameter exactly
- ✓ Factory-molded as a single piece without seams, eliminating the risk of post-installation cracking caused by improper lap joint treatment

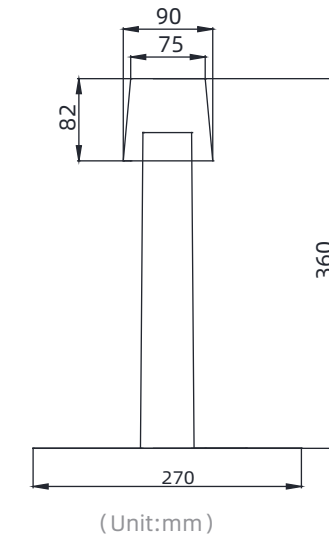
技术参数 //

Item	D60-120 Pipe Penetration	D140-200 Pipe Penetration
Material	TPO/PVC	TPO/PVC
Thickness	1.8mm	1.8mm
Height	250mm	310mm
Pipe Diameter	60/80/100/120mm	140/160/180/200mm
Base Diameter	160mm	240mm

Vent Pipe Prefabs

Scope of Application //

This is a single-piece injection-molded roof vent specifically designed to expel moisture from insulation layers. It features a broad welding base and a top anti-backflow cowl. During installation, the base is welded to the underlying waterproof membrane, and the cowl is then fitted to complete the assembly.



(Unit:mm)

Technical Advantages //

- ✓ The straight base and broad welding zone are injection-molded as a single piece, completely free of joints or seams
- ✓ The detachable cowl design ensures rain protection while allowing convenient future inspection and maintenance of the pipe
- ✓ The overall design effectively resists temperature fluctuations, wind loads, and foot traffic, with excellent anti-aging performance

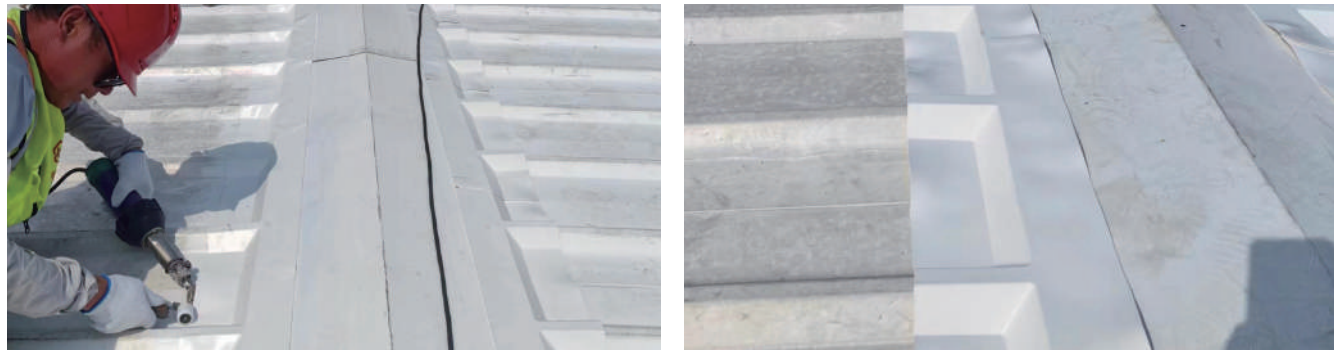
技术参数 //

Item	Detail
Material	Rigid TPO/PVC
Thickness	3mm
Height	360mm
Top Opening Diameter	49mm
Base Diameter	270mm

840 Ridge Capping Prefab

Scope of Application //

This product is specifically designed for 840-profile fused tile, plastic-steel tile, and steel-plastic tile roofing systems. It provides rapid, integrated ridge waterproofing by directly covering both sides of the ridge line and being welded in place, replacing the complex traditional process of manual membrane cutting and fitting.



Technical Advantages //

- ✓ Precisely shaped to match peaks and valleys of the 840 profile, requiring no complex cutting or adjustment during installation, significantly improving construction efficiency
- ✓ The one-piece design minimizes overlaps and complex details, fundamentally reducing leakage risks at the ridge and enhancing system reliability
- ✓ Aesthetic and Structurally Stable: Provides a clean appearance and resists internal stress deformation, further improving system reliability

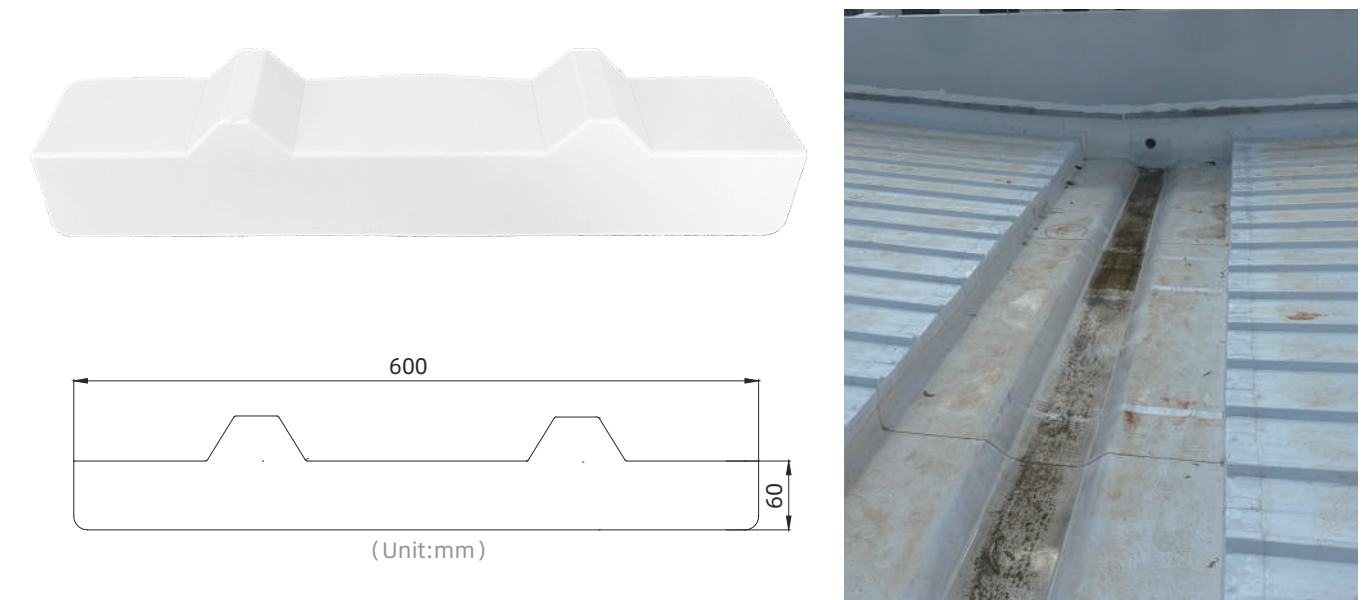
Technical Parameters //

Item	Detail
Material	TPO/PVC
Thickness	1.8mm
Length	600mm
Width	192mm
Compatible Profile	YX 30-280-840
Color	White (Customizable)
Packaging	10 pcs/pack

840 Gutter End Cap Prefab

Scope of Application //

Specifically designed for gutter termination in 840-profile fused tile, plastic-steel tile, and steel-plastic tile roofing systems. Custom-molded to match the specific gutter end contour of the 840 profile, it can be directly positioned and welded in place, replacing traditional manual cutting and piecing for rapid, integrated gutter end sealing.



Technical Advantages //

- ✓ Precisely molded to match the 840 profile gutter contour, eliminating on-site cutting and complex splicing to significantly improve installation efficiency
- ✓ The one-piece construction drastically reduces overlaps, effectively lowering leakage risks at gutter details
- ✓ Aesthetic and Structurally Stable: Provides a clean appearance and resists internal stress deformation, further improving system reliability

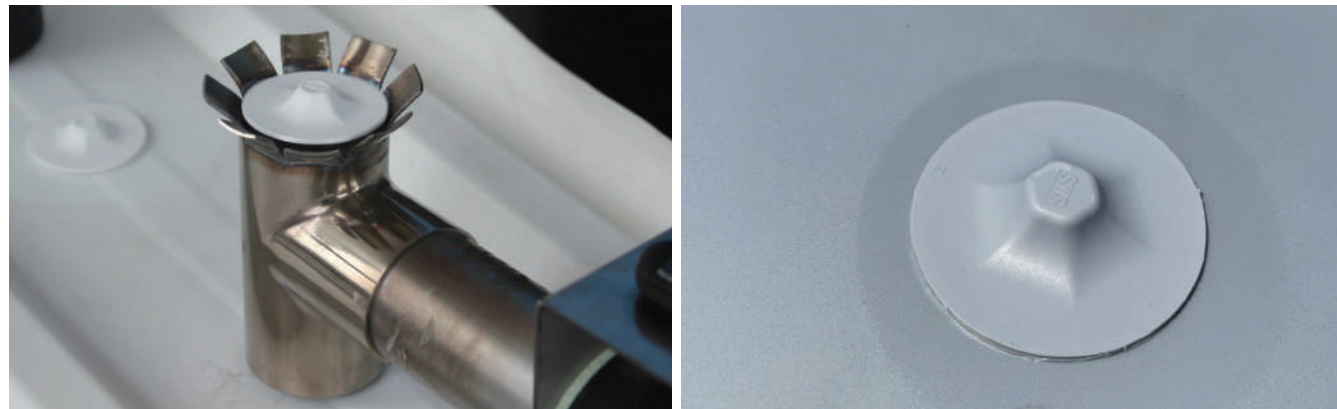
Technical Parameters //

Item	Detail
Material	TPO/PVC
Thickness	1.8mm
Length	600mm
Width	100mm
Compatible Profile	YX 30-280-840
Color	White (Customizable)
Packaging	10 pcs/pack

50 Screw Cap Cover

Scope of Application //

Specifically designed for waterproof sealing at screw fastening points on fused tile, steel-plastic, and plastic-steel roofing systems. Using a high-efficiency hot-air welder, it is quickly and securely fused with the membrane on the steel surface, effectively preventing leaks at screw penetrations and ensuring the integrity and durability of the roof waterproofing system.



Technical Advantages //

- ✓ When used with the specialized Shiwansen welding torch, it enables rapid welding with uniform and strong fusion points, eliminating risks of weak or missed welds and significantly improving project quality
- ✓ Simple operation requires less worker expertise while ensuring high pass rates and consistency in detail treatment

Technical Parameters //

Item	Detail
Material	TPO/PVC
Diameter	Φ50mm
Compatible Product	Fused Tile Cap Welding Torch
Thickness	2mm

80 Screw Cap Cover

Scope of Application //

Specifically designed for waterproof sealing at screw fastening points on fused tile, steel-plastic, and plastic-steel roofing systems. Using a handheld welder, it is quickly and securely fused with the membrane on the steel surface, effectively preventing leaks at screw penetrations and ensuring the integrity and durability of the roof waterproofing system.



Technical Advantages //

- ✓ The raised hex-head top ensures optimal stress distribution and excellent anti-crushing performance, effectively preventing screw heads from abrading the overlying membrane
- ✓ Injection-molded as a single piece without seams, providing robust structure and easy installation while eliminating on-site cutting, resulting in a smooth and aesthetically pleasing roof surface after welding

Technical Parameters //

Item	Detail
Material	TPO/PVC
Diameter	Φ80mm
Thickness	2.0mm

Polymer Assembled Lightning Protection Base

Scope of Application //

Designed specifically for single-ply roofing systems, this lightning protection base consists of a metal base plate, an aluminum alloy support column with insulation ring, a membrane flange, and an aluminum alloy clamp. During installation, the bottom membrane flange is welded to the roof waterproofing layer, and the lightning conductor is secured to the top of the base using the aluminum alloy clamp.



Technical Advantages //

- ✓ Easy Installation: The split design allows for more convenient and faster welding of the base
- ✓ Durable and Aesthetic: The all-aluminum alloy structure offers strong corrosion resistance and high load-bearing capacity; its refined appearance effectively protects the underlying membrane
- ✓ Anti-Loosening Design: The aluminum alloy concave base and convex cover form a rigid connection, preventing loosening due to thermal expansion and contraction

Technical Parameters //

Item	Detail
Top Material	6063 Aluminum Alloy
Base Material	TPO/PVC Membrane
Base Dimensions	Φ160 mm Waterproof Layer (Customizable)
Height	≥50mm
Compression Resistance	≥ 500N
Tensile Resistance	≥800N

Integrated Lightning Protection Base

Scope of Application //

Designed specifically for single-ply roofing systems, this product is an optimized version of the assembled base. It retains the core structure - metal base plate, aluminum alloy support column, and membrane flange - and is suitable for lightning protection system installations where high rigidity is not mandatory.



Technical Advantages //

- ✓ Cost-Effective Solution: By omitting the insulation ring while maintaining core structural strength and waterproof performance, this product provides customers with a more economical option
- ✓ Core Performance Maintained: Retains the robust structure and reliable welded waterproofing flange of the assembled lightning protection base, ensuring the support's compression resistance

Technical Parameters //

Item	Detail
Top Material	6063 Aluminum Alloy
Base Material	TPO/PVC Membrane
Base Dimensions	Φ160 mm Waterproof Layer (Customizable)
Height	≥150mm
Compression Resistance	≥1500N
Tensile Resistance	≥500N

Triangular Lightning Protection Base

Scope of Application //

Featuring a triangular support design that replaces traditional cylindrical shapes, this product achieves lighter weight and cost efficiency while maintaining full functionality.



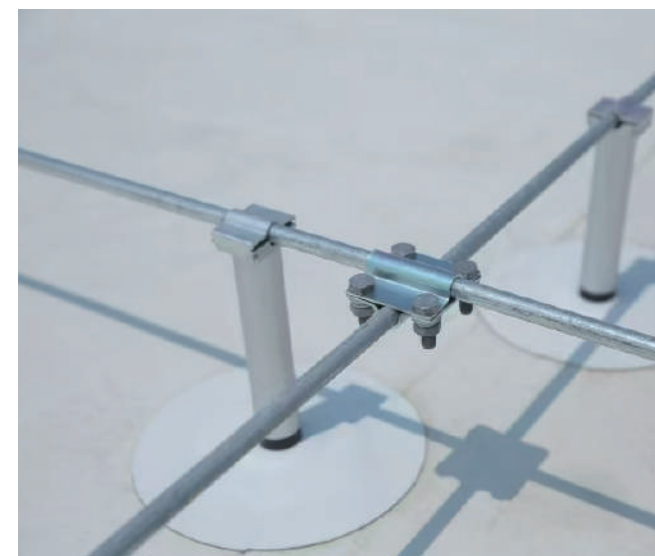
Technical Advantages //

- ✓ The triangular support structure ensures sufficient load-bearing capacity while significantly reducing product weight and material costs

Technical Parameters //

Item	Detail
Top Material	6063 Aluminum Alloy
Base Material	TPO/PVC Membrane
Base Dimensions	Φ160 mm Waterproof Layer (Customizable)
Height	≥150mm
Tensile Resistance	Lightning Conductor Diameter 12 mm, Tensile Strength: 419 N
	Lightning Conductor Diameter 10 mm, Tensile Strength: 95 N

Application Demonstration //



Decorative Trims

Scope of Application //

A visual enhancement component specifically designed for single-ply PVC/TPO roofing systems. By installing these strips in different zones, they create clean, regular lines that simulate metal peaks, effectively breaking the monotony of large roof areas. This enhances the building's overall aesthetics and design appeal, while also serving water diversion and reinforcement functions.

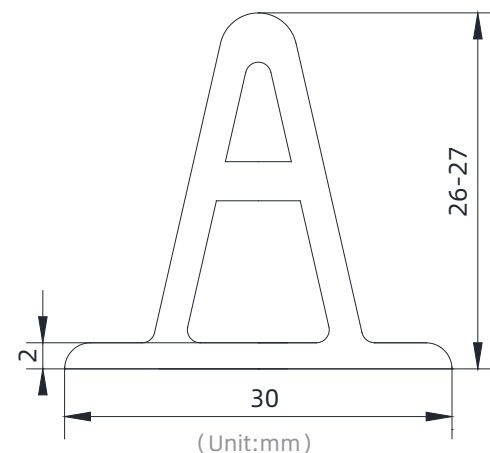


Technical Advantages //

- ✓ Enhanced Aesthetic Value: Transforms monotonous roof surfaces into visually appealing planes with well-arranged lines and color combinations, significantly improving architectural appearance
- ✓ Custom Color Options: Offers a wide range of colors to either blend with the roof membrane or create striking contrasts, meeting personalized design and brand display needs
- ✓ Weather Resistance & Durability: UV-resistant and corrosion-resistant material withstands harsh outdoor conditions over the long term, maintaining vibrant color and reliable performance
- ✓ Structural Reinforcement: Strengthens the waterproofing layer and enhances the system's wind load resistance

Technical Parameters //

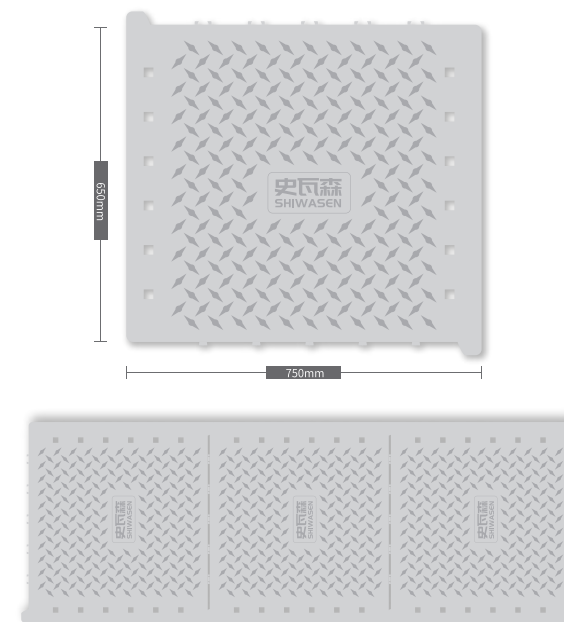
Item	Detail
Material	TPO/PVC
Thickness	2-3mm
Width	30mm
Height	26-27mm
Length	3 m
Color	Black/White/Gray (Customizable)



Tile-Type Walkway Plate

Scope of Application //

These modular walkway plates, manufactured from high-performance polymer materials, feature specialized snap joints on both sides. The plates interlock via these connectors to form a continuous walkway, providing a safe, high-strength, aging-resistant, and puncture-resistant access path for roof maintenance.



Technical Advantages //

- ✓ The snap-fit joints accommodate thermal expansion and contraction, effectively releasing stress to prevent damage to the underlying waterproofing membrane
- ✓ The overlapping design facilitates drainage, while the modular structure allows for localized disassembly and replacement, simplifying roof inspection and repair
- ✓ The 7 mm thickness provides superior puncture resistance

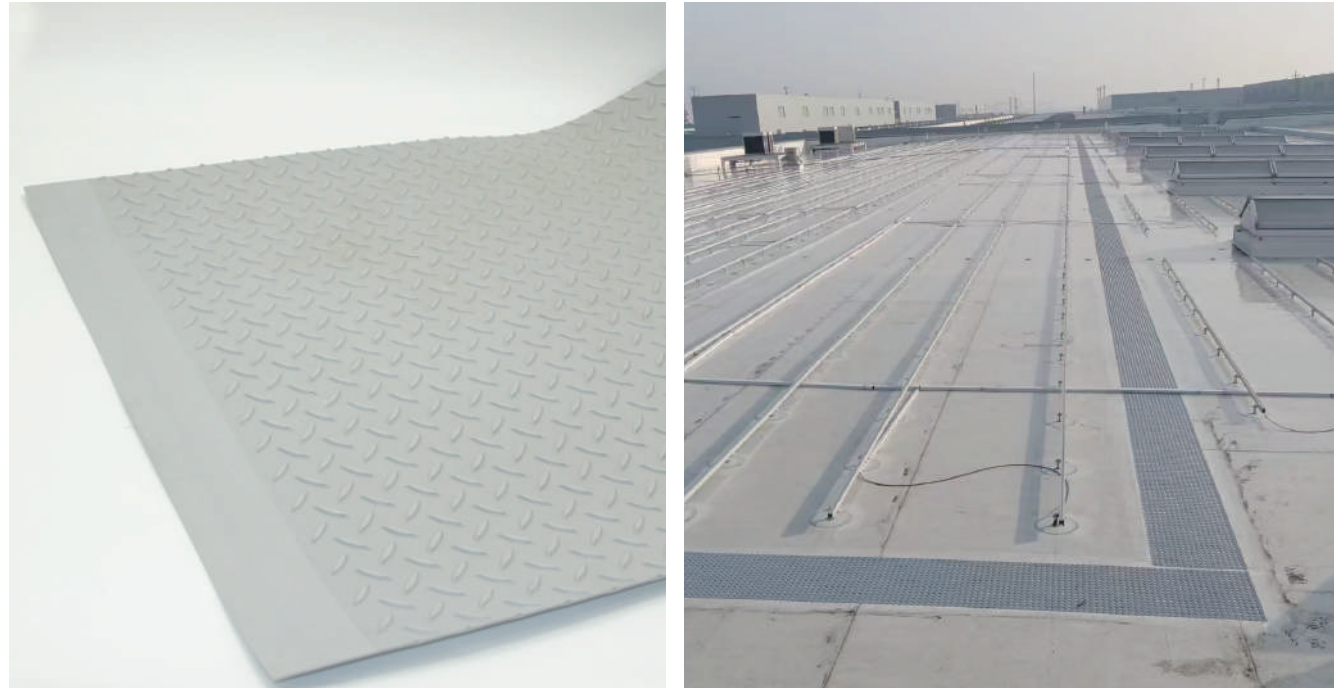
Technical Parameters //

Item	Detail
材质	TPO/PVC
长度	650mm
宽度	750mm
厚度	7mm (含花纹)
颜色	可定制
logo	可定制
抗UV	人工气候加速老化试验≥2500小时

Tile-Type Walkway Plate

Scope of Application //

Made from high-performance polymer materials, this product is specifically designed for maintenance access paths on single-ply TPO/PVC roofs. Available in multiple widths including 86.5 cm (with welding flange), 60 cm, 50 cm, and 40 cm, with a standard length of 10 meters per strip. During installation, it is integrated with the base membrane through hot-air welding, providing a safe, high-strength, aging-resistant, and puncture-resistant walkway for roof maintenance.



Technical Advantages //

- ✓ The polymer material combines high strength with high elongation, offering corrosion resistance, aging resistance, and long service life
- ✓ The elongated design significantly reduces seams, improving installation and welding efficiency to quickly form continuous maintenance access
- ✓ Supports flexible customization of width, thickness, and color to meet diverse design requirements

Technical Parameters //

Item	Detail
Material	TPO/PVC
Length	10 m/roll
Width	40/50/60/86.5cm
Thickness	3.4/4.0/4.5mm (pattern included)
Color	Customizable
UV Resistance	Accelerated artificial aging test ≥ 2500 hours

Yellow-Edge Walkway Plate

Scope of Application //

This product is a polymer walkway plate with a glass-fiber reinforced warning edge. It can be installed through one-pass hot-air welding, providing a safe access route for roof maintenance that combines high strength, aging resistance, and dimensional stability.



Technical Advantages //

- ✓ The bright yellow edge is seamlessly integrated into the walkway area, eliminating the need for secondary painting and providing long-lasting visual warning to significantly enhance roof traffic and operational safety
- ✓ The glass-fiber reinforced warning edge greatly improves the board's dimensional stability, effectively suppressing internal stress caused by thermal shrinkage and preventing damage to the under-

Technical Parameters //

Item	Detail
Material	TPO/PVC
Length	10 m/roll
Width	86.5cm
Thickness	3.4/4.0/4.5mm (pattern included)
Color	Customizable
UV Resistance	Accelerated artificial aging test ≥ 2500 hours

PVC Gasket

Scope of Application //

PVC gaskets are used in civil engineering applications such as tunnels, utility tunnels, and basements for mechanically anchored PVC membrane systems. The PVC waterproof membrane is fixed to the PVC gasket using spot welding with a hot-air gun.



Technical Advantages //

- Made from high-quality PVC resin with an embedded 1.5 mm thick metal washer, significantly enhancing the gasket's resistance to nail gun impact
- Enables fast assembly while preventing damage to the membrane
- Provides strong and reliable bonding through thermal fusion

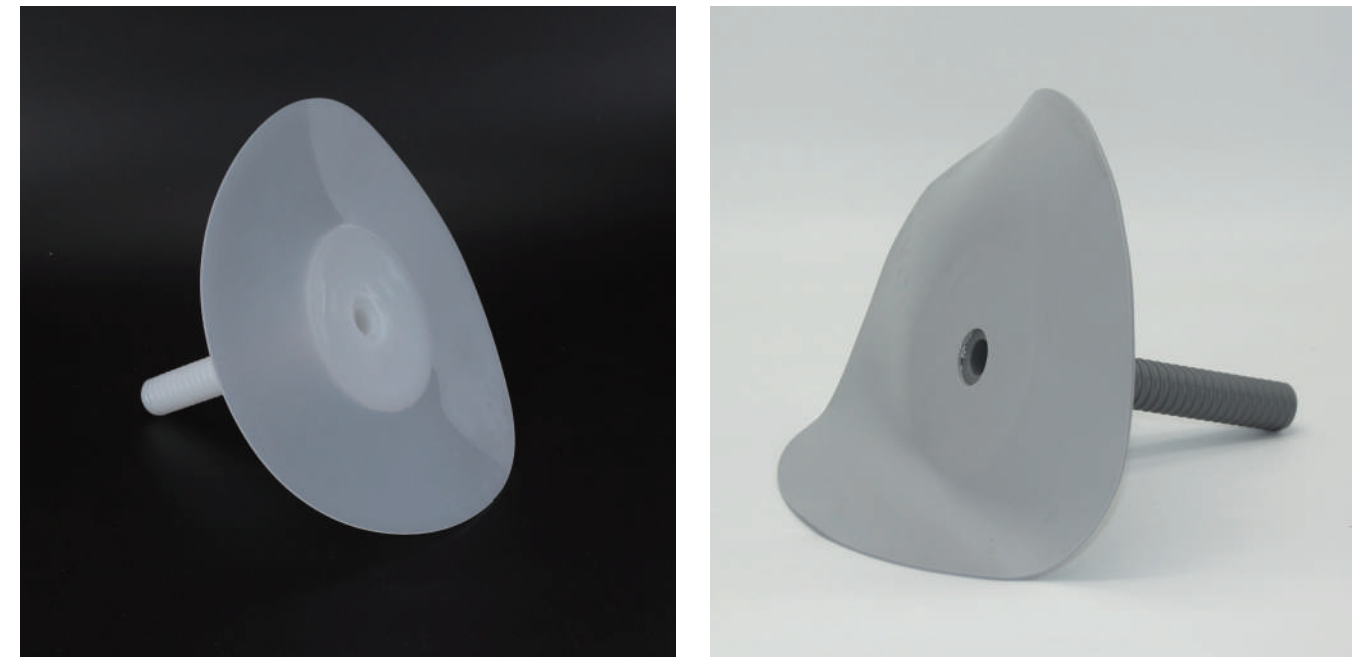
Technical Parameters //

Item	Detail
材质	碳钢、PVC 聚氯乙烯树脂
金属垫圈直径	20mm
金属垫圈厚度	1.5mm
垫片外直径	100mm
垫片高度	6mm
垫片厚度	1.5mm
金属垫片孔径	4mm

Rooted Anchor

Scope of Application //

Used in concealed engineering projects such as tunnels and utility tunnels constructed by the concealed excavation method. After the HDPE/PVC waterproof membrane is installed using the mechanically anchored method, holes are drilled through the waterproof layer into the shotcrete substrate. Rooted adhesive is injected, and the anchor is inserted. The peripheral flange is then welded to the main membrane to form a seal. The central M16 threaded hole accommodates a 16 mm diameter stud, serving as an anchor point for rebar tying.



Technical Advantages //

- Ensures complete welding with the tunnel waterproof membrane, eliminating leakage risks associated with pre-embedded rebar and enhancing overall waterproof performance
- Enables convenient node processing and rapid construction progress

Technical Parameters //

项目	Detail
锚固件长度	200mm
内孔螺纹	M16
基座直径	Φ120mm
卷材尺寸	Φ280mm
卷材厚度	1.5-2mm
材质	HDPE/PVC

SWS1600 Handheld Welding Gun

Scope of Application //

Suitable for welding polymer waterproofing membranes (TPO/PVC), PVC floor welding, thermoplastic forming, activation and removal of adhesives and hot-melt glues, welding of tarpaulins and advertising banners, processing of rigid thermoplastic materials in plastics and container manufacturing, drying damp surfaces, and all types of drying and preheating processes.

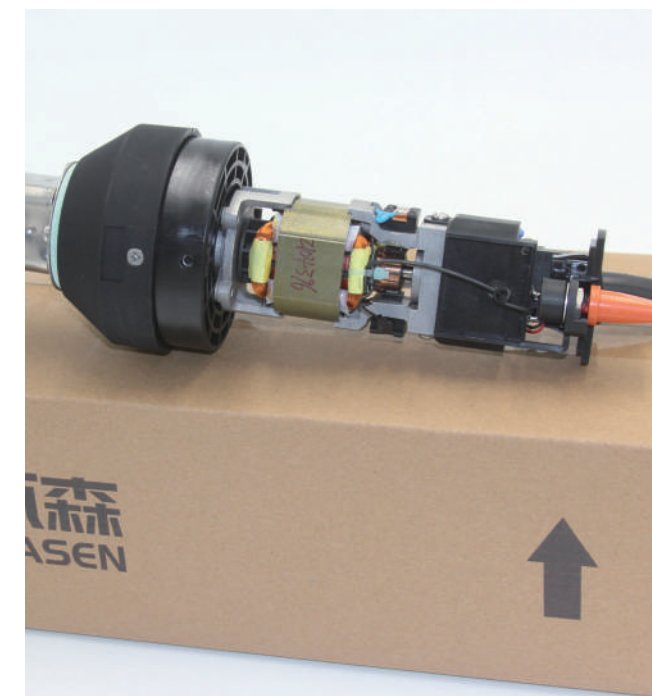


Technical Parameters //

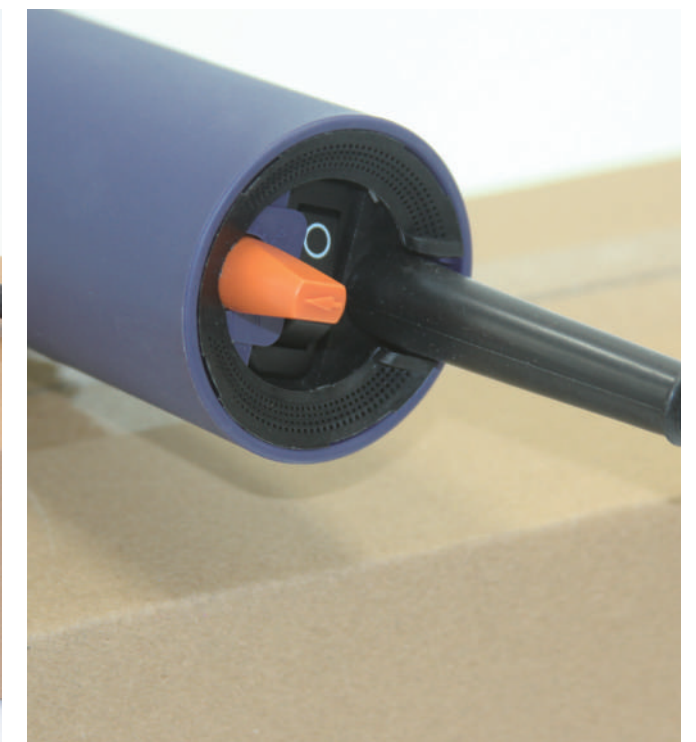
Item	Detail
Input Voltage	230V/120V
Frequency	50/60HZ
Power	1600W
Temperature Range	20~620°C
Airflow	Max180L/min
Noise	≤65Db
Noise	1.05Kg
Motor	Brushed
Handle Size	58mm
Overheat Protection	Standard
Temperature Control	Open-Loop
Certification	CE



Upgraded Motor System: Customized motor extends overall service life and improves brush performance, reducing wear and increasing brush life to 1,000 hours.



High-Precision Potentiometer: Enables more accurate temperature adjustment. Utilizes high-precision, abrasion-resistant heating wire for enhanced durability and extended service life.

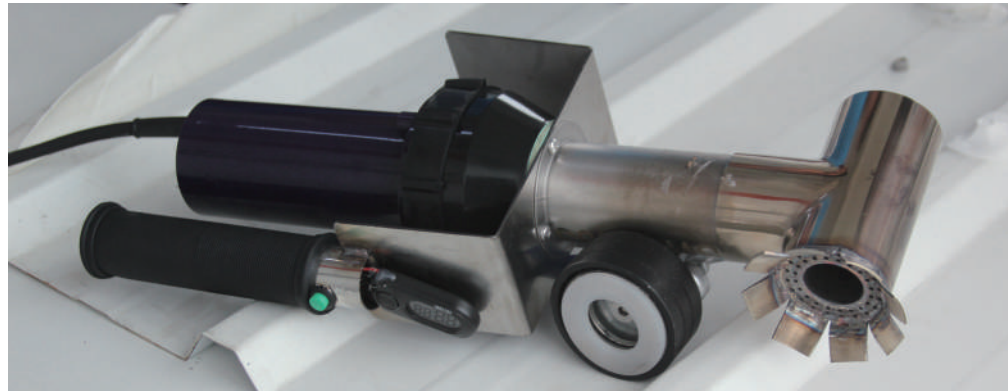


Dust-proof Switch: Designed with dust and water-resistant construction, ensuring reliable service life even in harsh working conditions.

Cap Welding Gun

Scope of Application //

Specifically designed for welding prefabricated screw cap covers (cap diameter 50 mm). It addresses leakage risks caused by fastener penetrations through the waterproofing layer. Using efficient hot-air welding technology, it fuses specialized caps with the base membrane to quickly form durable and reliable waterproof details, ensuring the integrity of the roof waterproofing system.



Technical Advantages //

- ✓ Efficient Construction: Fast welding speed significantly improves work efficiency and shortens project timelines
- ✓ Consistent Quality: Uniform weld spots with seamless joints eliminate issues like weak or missed welds
- ✓ Easy Operation: Reduced operational difficulty and labor intensity, minimal reliance on operator experience, and high finished product qualification rate

Technical Parameters //

Item	Detail
Input Voltage	230V/120V
Frequency	50/60HZ
Power	3400W
Temperature Range	20~620°C
Airflow	Max360L/min
Noise	≤65Db
Noise	1.2Kg
Motor	Brushed
Handle Size	65mm
Overheat Protection	Standard
Temperature Control	Open-Loop

Application Demonstration //



SWS V1 Automatic Welding Machine

Scope of Application //

This welder utilizes advanced hot-air heating technology, offering simple operation, stable performance, and high power output. It enables rapid, high-quality welding of thermoplastic waterproofing membranes such as PVC, TPO, EPDM, ECB, and EVA.

Technical Advantages //

- ✓ Brushless blower motor: Maintenance-free with extended service life
- ✓ 38 KG weight: Ensures more reliable welding quality
- ✓ Closed-loop feedback control system: Solves poor welding due to low voltage
- ✓ Rear wheel braking system: Prevents wrinkling during mechanically fixed welding
- ✓ Removable toothed welding nozzle: Addresses weak welding caused by TPO/PVC contamination

Technical Parameters //

Item	Detail
Input Voltage	230V
Rated Power	4200W
Welding Temperature	50~620°C
Welding Speed	1~10m/min
Welding Width	40mm
Overall Dimensions	555*358*304mm
Machine Weight	38Kg
Airflow	Airflow Adjustable
Certification	CE
Motor	Brushless



ROOF 50 Automatic Welding Machine

Scope of Application //

The newly designed ROOF50 roof welding machine enables multi-scenario welding applications, specifically developed for fused tile, plastic-steel tile, steel-plastic panel, and fully adhered steel plate roofing systems. It performs rapid welding in confined spaces such as gutter interiors, gutter edges, and parapet tops, supporting materials including PVC, TPO, and EPDM.

Technical Advantages //

- ✓ Ultra-narrow body: Allows free welding across various steel deck peaks and valleys
- ✓ Slidable rear wheels: Lateral adjustment meets welding requirements at different positions
- ✓ Lightweight design: Facilitates movement and handling on flexible roofing systems
- ✓ Closed-loop feedback control system: Solves poor welding due to low voltage
- ✓ Horizontally oscillating pressure wheel: Effectively prevents weak welding caused by uneven substrates or steel sheet deformation

Technical Parameters //

Item	Detail
Input Voltage	230V
Power	4200W
Welding Temperature	50~620°C
Welding Speed	1~10m/min
Welding Width	40mm
Overall Dimensions	557*316*295mm
Machine Weight	28Kg
Certification	CE
Motor	Brushless



ROOF 4 Automatic Welding Machine

Scope of Application //

Specifically designed for edge sealing of loosely laid TPO/PVC waterproof membranes in roof systems. Provides reliable 40 mm single-pass welding with enhanced performance.



Technical Advantages //

- Compact and lightweight with self-propelled operation
- Overload protection prevents motor damage
- Visual temperature and speed display for intuitive operation
- Dual welding shoe configuration: copper shoe for TPO, stainless steel shoe for PVC. Copper welding shoe for TPO, stainless steel welding shoe for PVC

Technical Parameters //

Item	Detail
Input Voltage	230V
Frequency	50/60HZ
Power	1100W
Welding Speed	0.5-5m/nmin
Heating Temperature	50-450°C
Welding Material Thickness	0.2 mm-1.5 mm (single layer)
Overlap Width	100mm
Weld Strength	40mm
Machine Weight	5 kg
Digital Display Function	Dual digital display (temperature & speed)
Certification	CE

Equipment Accessories

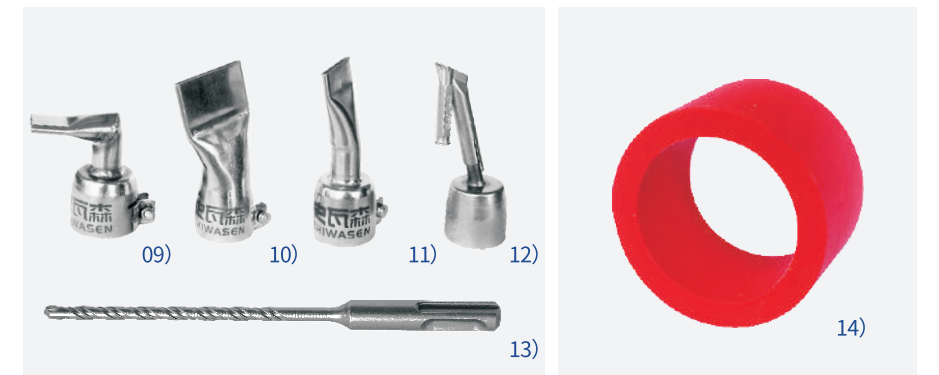
- 01) Shiwansen Welding Gun Heating Element 230V 550W
- 02) WELDY Welding Gun Heating Element 230V 550W
- 03) UNIROOF Welder Heating Element 230V 3300W
- 04) Extrusion Welding Gun Heating Element 230V 3300W



- 05) Teflon Pressure Roller
- 06) T-joint Scraper
- 07) Hook Needle
- 08) Silicone Pressure Roller



- 09) 90° Welding Nozzle
- 10) 40 mm Welding Nozzle
- 11) 20 mm Welding Nozzle
- 12) Welding Rope Nozzle
- 13) Concrete Drill Bit



- 14) Welder Silicone Wheel

- 15) Polymer Tool Set



HOMOGENEOUS INTEGRATION, SEAMLESS UNITY

THROUGHOUT THE 25-YEAR LIFECYCLE OF A PHOTOVOLTAIC POWER STATION, THE RELIABILITY OF SUPPORTS DEPENDS NOT ONLY ON THEIR OWN STRENGTH BUT ALSO ON THE INTEGRITY OF THEIR INTEGRATION WITH THE ROOF WATERPROOFING SYSTEM. SHIWANSEN, DEEPLY AWARE OF INDUSTRY CHALLENGES, CONSISTENTLY ADHERES TO ONE CORE PRINCIPLE: ELIMINATING HIDDEN RISKS CAUSED BY "FORMULATION DIFFERENCES".

WE INSIST ON CUSTOM-PRODUCING PHOTOVOLTAIC SUPPORTS FOR YOUR PROJECT, ENSURING THAT THE UNDERLYING MEMBRANE AND THE ROOF SUBSTRATE MEMBRANE SHARE THE SAME MATERIAL, BRAND, AND FORMULATION.

THIS IS FAR MORE THAN JUST SUPPLYING COMPONENTS - IT IS A SYSTEMATIC SOLUTION ROOTED IN MATERIAL SCIENCE TO ERADICATE POTENTIAL RISKS AT THEIR SOURCE.

- ✔ Excellent Compatibility, Worry-Free Welding: Fundamentally prevents welding defects such as weak bonds, false welds, or cracking caused by chemical formulation differences between membranes from different manufacturers
- ✔ Uniform Strength, Outstanding Performance: Weld strength matches that of the base material, forming an integrated waterproof structure that ensures the overall sealing integrity of the roof
- ✔ Full Lifecycle Assurance: Identical materials mean consistent aging cycles and weather resistance, providing long-term and stable protection for the entire photovoltaic roofing system

ADVANTAGE



Disc-Fixed PV Support

Scope of Application //

A through-type PV support specifically designed for TPO/PVC single-ply roofing systems. It features a composite structure of 304 stainless steel and polymer membrane, enabling quick fixation via a four-hole disc and self-drilling screws. The membrane flange of the support is heat-air welded to the main waterproof layer, forming a fully sealed, integrated waterproof assembly with a dual-sealing design. Suitable for supporting PV mounting structures, cable trays, and other roof equipment, it simultaneously addresses structural fixation, waterproof sealing, and wind uplift resistance requirements.



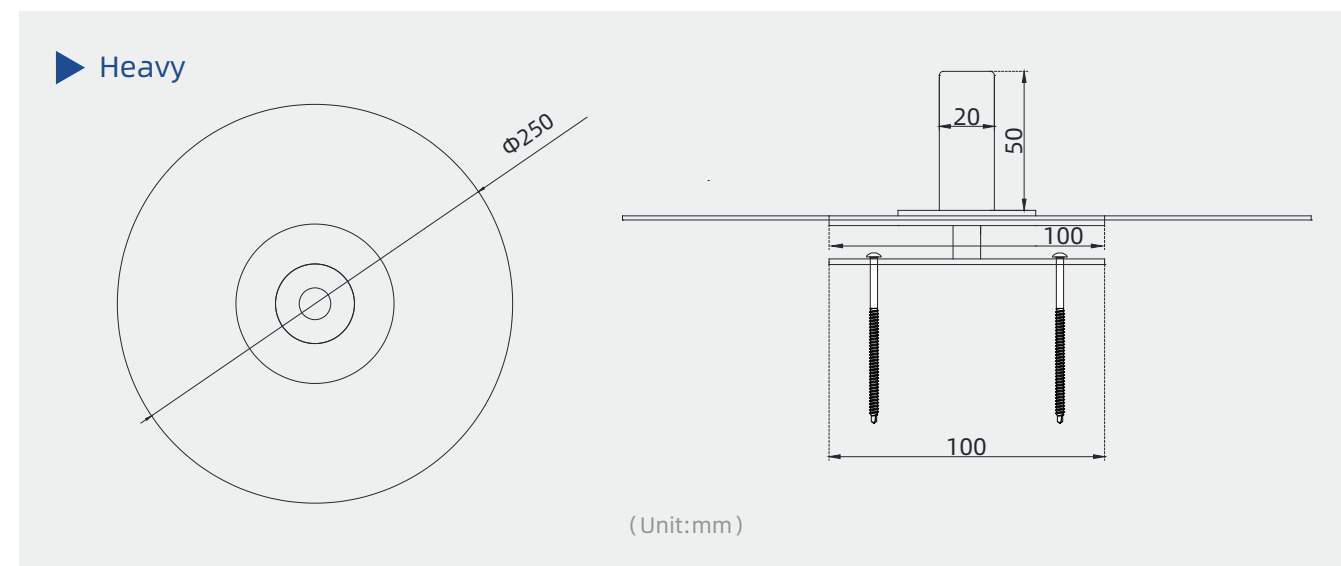
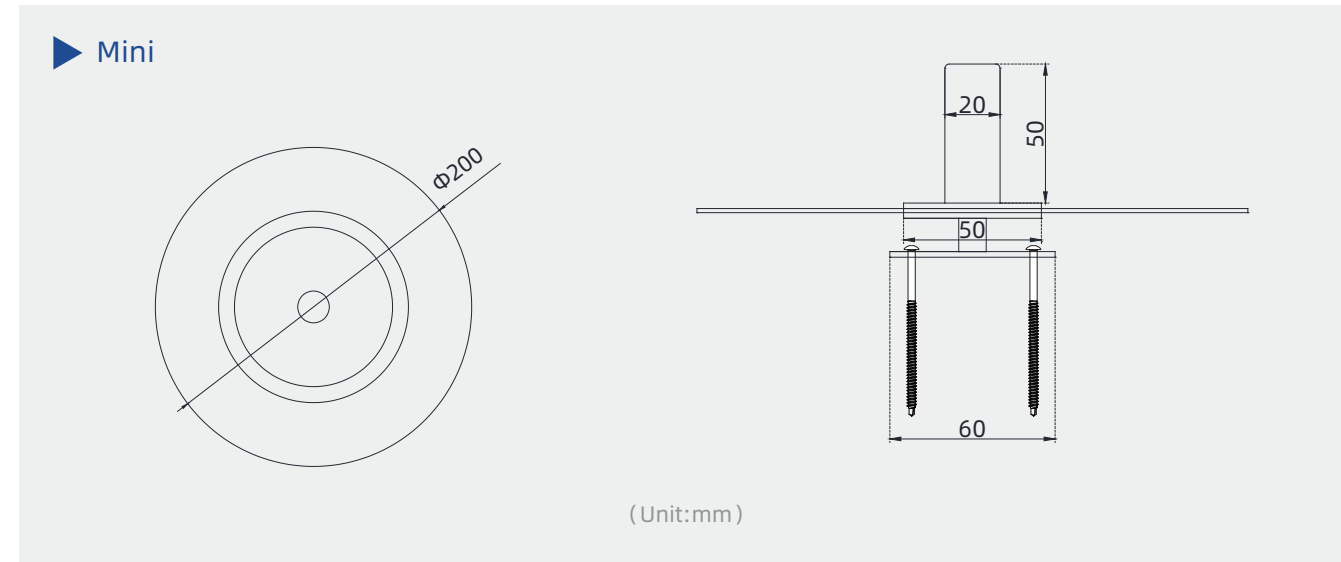
Technical Advantages //

- ✔ Dual Waterproofing: Combines hot-air welding with water-soluble adhesive film technology for dual protection. If weld seam leakage occurs, the adhesive film activates upon contact with water to automatically seal the leak
- ✔ Quick and Efficient Installation: Utilizes standardized discs and self-drilling screws, requiring no complex equipment or procedures, significantly improving installation efficiency
- ✔ Stable Structure: The disc distributes load evenly across its four corners, while the central threaded connection forms a stable support system that effectively transfers loads, offering excellent compression and pull-out resistance

Technical Parameters //

Item	Detail
Material	304 Stainless Steel, TPO/PVC Membrane
Support Membrane	Brand and material customizable, accepts customer-provided materials
Tensile Resistance	≥ 9000 N (on steel plate ≥ 0.8 mm)
Compression Resistance	≥ 300 kg (steel plate deformation) (on steel plate ≥ 0.8 mm)
Design Load	4500N

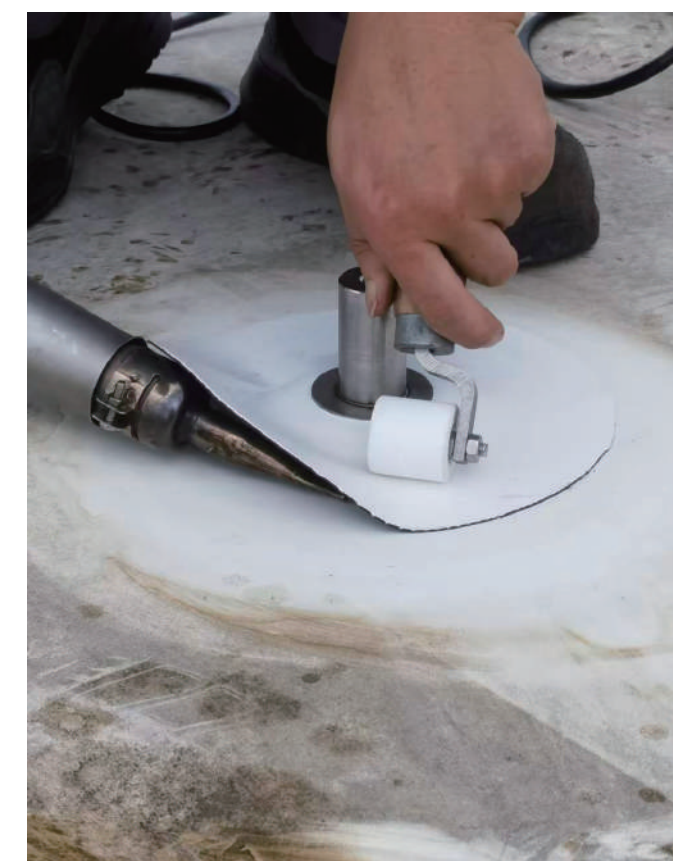
Dimension Diagram //



Installed Effect Diagram //



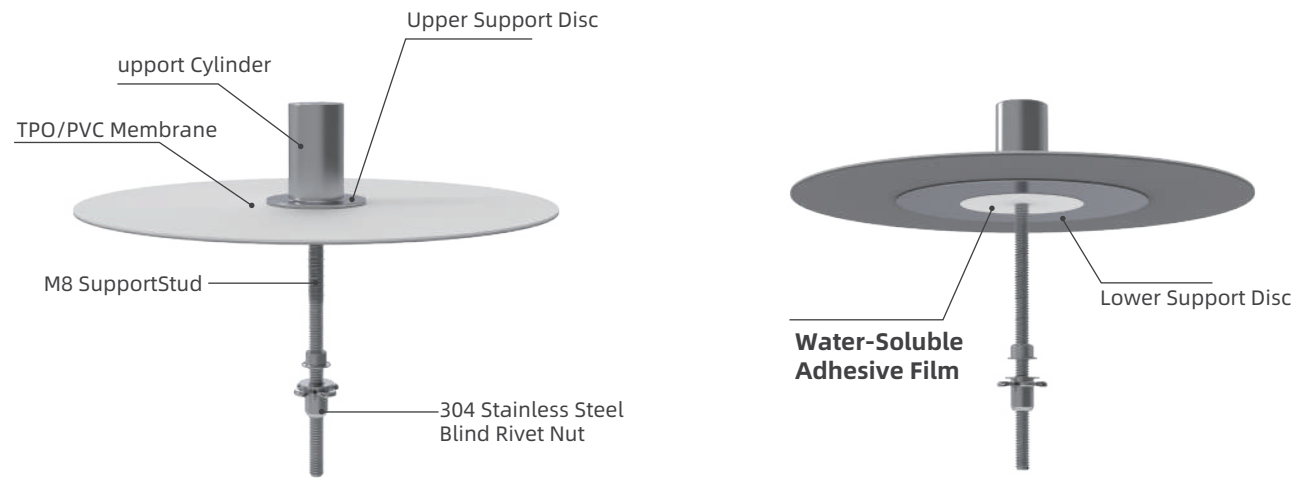
Application Demonstration //



Blind Rivet PV Support

Scope of Application //

A through-type PV support specifically designed for TPO/PVC single-ply roofing systems. It features an integrated composite structure of 304 stainless steel and TPO/PVC membrane, secured to the underlying profiled steel sheet via blind rivet fixation. The upper TPO waterproof membrane base is thermally welded to the main waterproof layer, forming a fully sealed, integrated waterproof assembly. With a specially designed dual-sealing system, it ensures long-term roof waterproofing integrity. Suitable for supporting elevated equipment such as PV mounting structures, cable trays, and inverters, simultaneously addressing fixation, waterproofing, and wind uplift resistance.



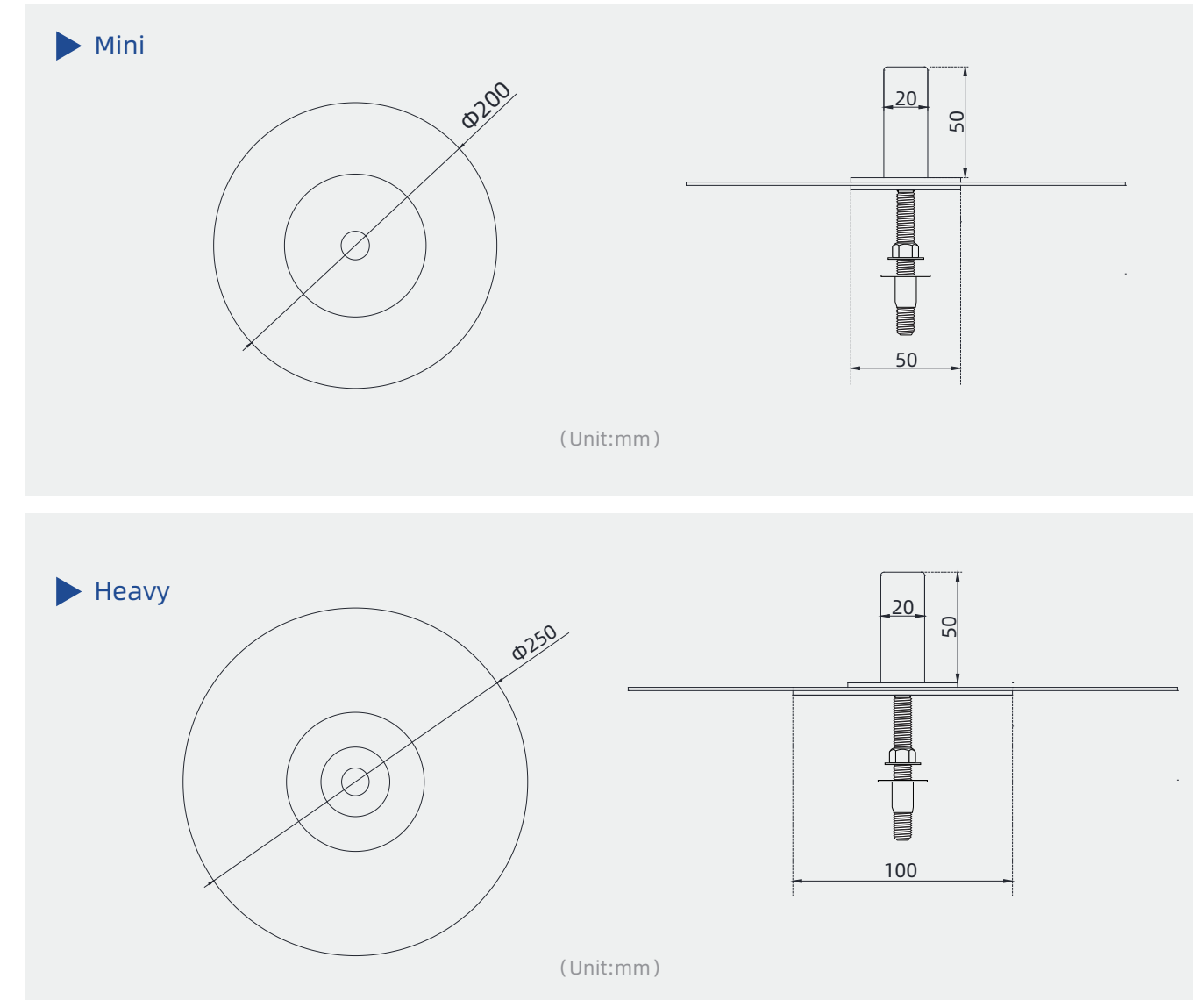
Technical Advantages //

- ✓ Dual Waterproofing: Combines hot-air welding with water-soluble adhesive film technology for dual protection. If weld seam leakage occurs, the adhesive film activates upon contact with water to automatically seal the leak
- ✓ The all-304-stainless-steel construction provides the system with superior corrosion resistance

Technical Parameters //

Item	Detail
Material	304 Stainless Steel, TPO/PVC Membrane
Support Membrane	Brand and material customizable, accepts customer-provided materials
Tensile Resistance	≥ 5000 N (on steel plate ≥ 0.8 mm)
Compression Resistance	≥ 300 kg (steel plate deformation) (on steel plate ≥ 0.8 mm)
Design Load	2750N

Dimension Diagram //



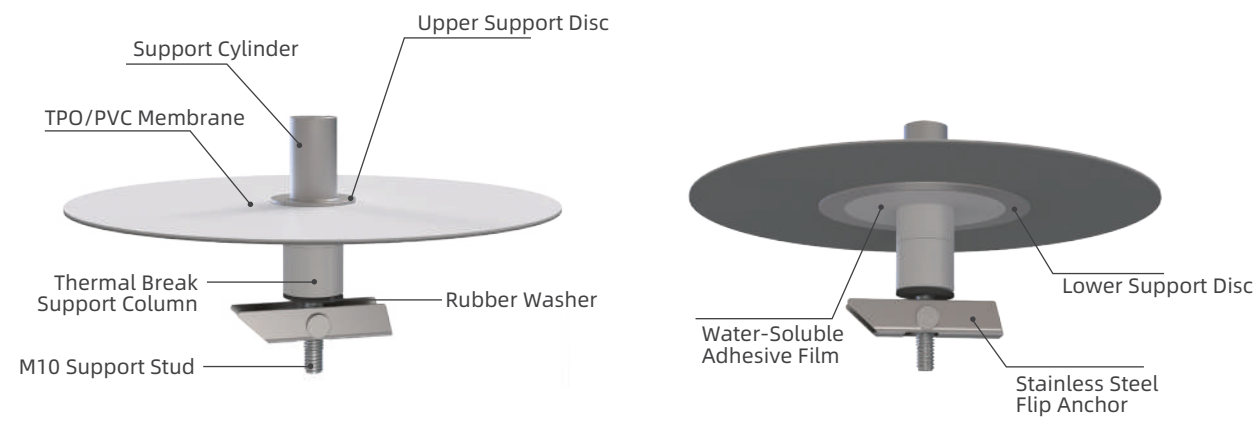
Installed Effect Diagram //



Flip-Rivet Fixed PV Support

Scope of Application //

A through-type PV support specifically designed for TPO/PVC single-ply roofing systems. Its core consists of a 304 stainless steel and polymer membrane composite structure, secured via a gravity self-locking flip anchor. The upper TPO waterproofing membrane base is thermally welded to the main waterproof layer, forming a fully sealed, integrated waterproof assembly. With a specially designed dual-sealing system, it ensures long-term roof reliability. Suitable for supporting elevated equipment such as PV mounting structures and cable trays, it simultaneously addresses structural fixation, waterproof sealing, and wind uplift resistance, providing a stable and reliable installation solution for rooftop PV systems.



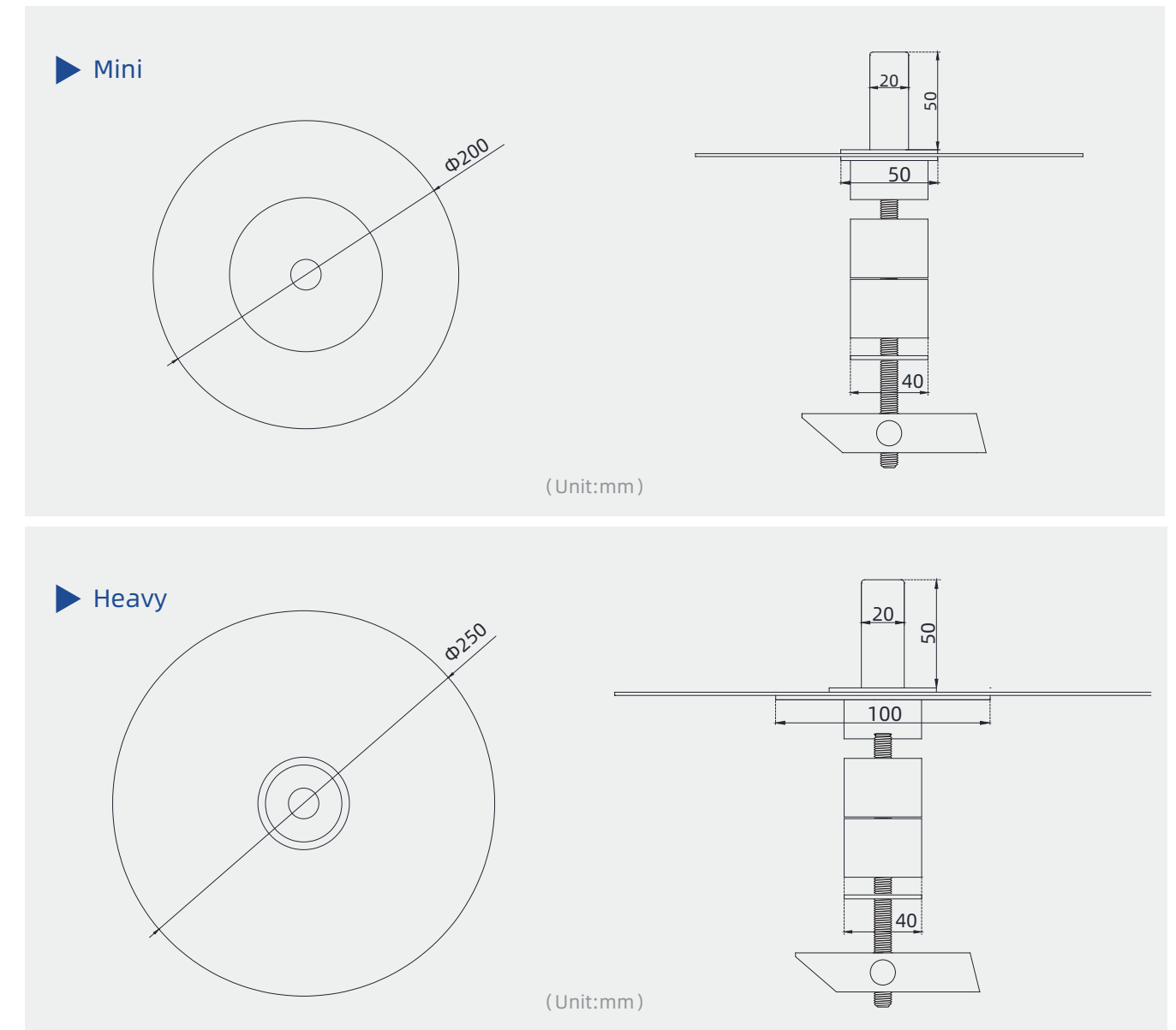
Technical Advantages //

- ✓ **Dual Waterproofing:** Combines hot-air welding with water-soluble adhesive film technology for dual protection. If weld seam leakage occurs, the adhesive film activates upon contact with water to automatically seal the leak
- ✓ **Enhanced Compression-Resistant Structure:** The thermal break support column, matched to insulation thickness, directly transfers load between the lower support disc and roof steel sheet, forming a stable compression-resistant structure that significantly improves point load capacity and prevents steel deformation
- ✓ **Gravity Self-Locking:** The stainless steel flip anchor features an eccentric weight design. After penetrating the roof steel sheet, it automatically rotates 90° and locks horizontally beneath the sheet to create a secure support

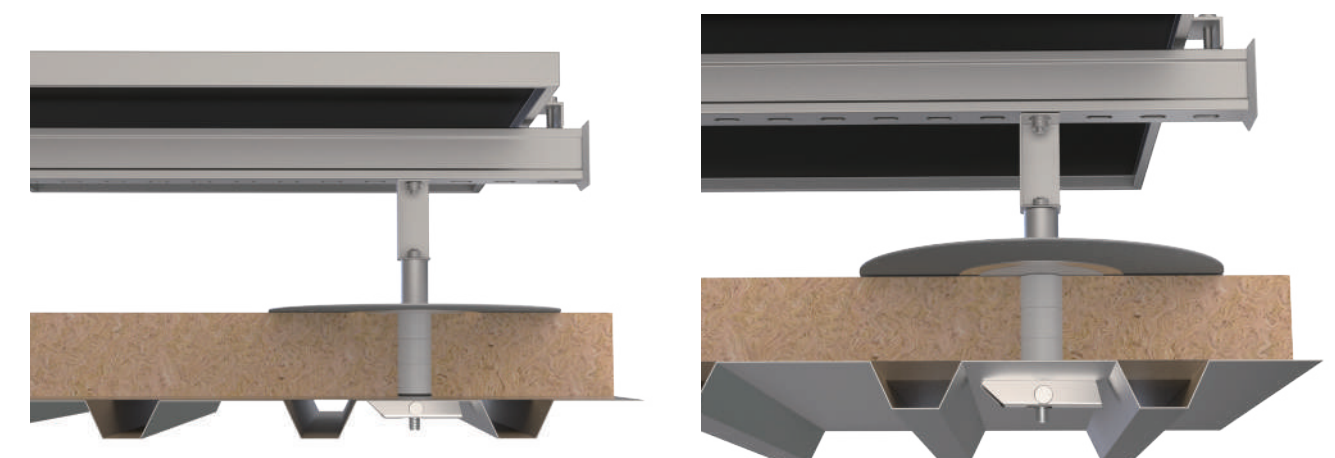
Technical Parameters //

Item	Detail
Material	304 Stainless Steel, TPO/PVC Membrane
Support Membrane	Brand and material customizable, accepts customer-provided materials
Tensile Resistance	≥ 9000 N (on steel plate ≥ 0.8 mm)
Compression Resistance	≥ 500 kg (steel plate deformation) (on steel plate ≥ 0.8 mm)
Design Load	4500N

Dimension Diagram //



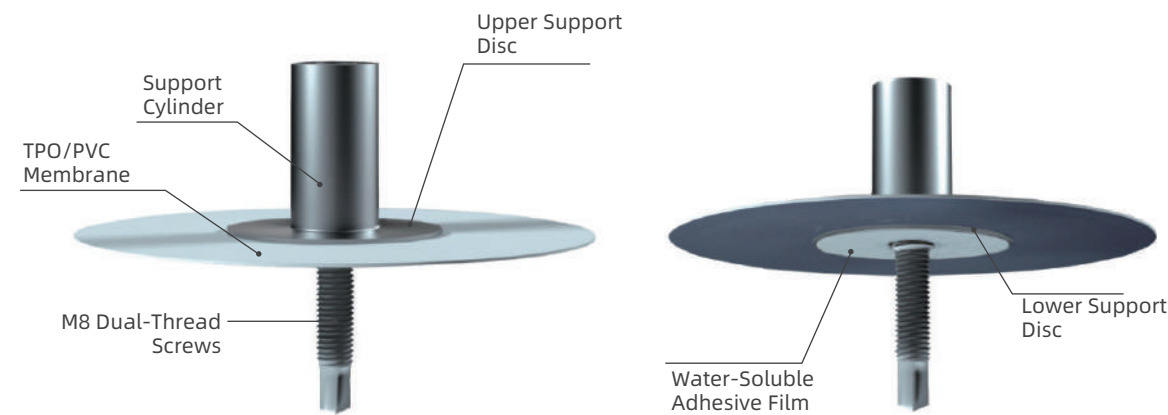
Installed Effect Diagram //



Dual-Threaded PV Support

Scope of Application //

A compact PV support specifically designed for narrow-trough thin steel sheet substrates in fully adhered light steel roof systems and fused tile systems. It features a 304 stainless steel and polymer membrane composite structure, combined with an integrated dual-threaded screw fastening solution, offering small size, precise installation, and reliable load-bearing capacity. The product maintains the dual waterproofing design and is suitable for direct purlin fixation, providing a specialized solution for lightweight roof-top PV systems.



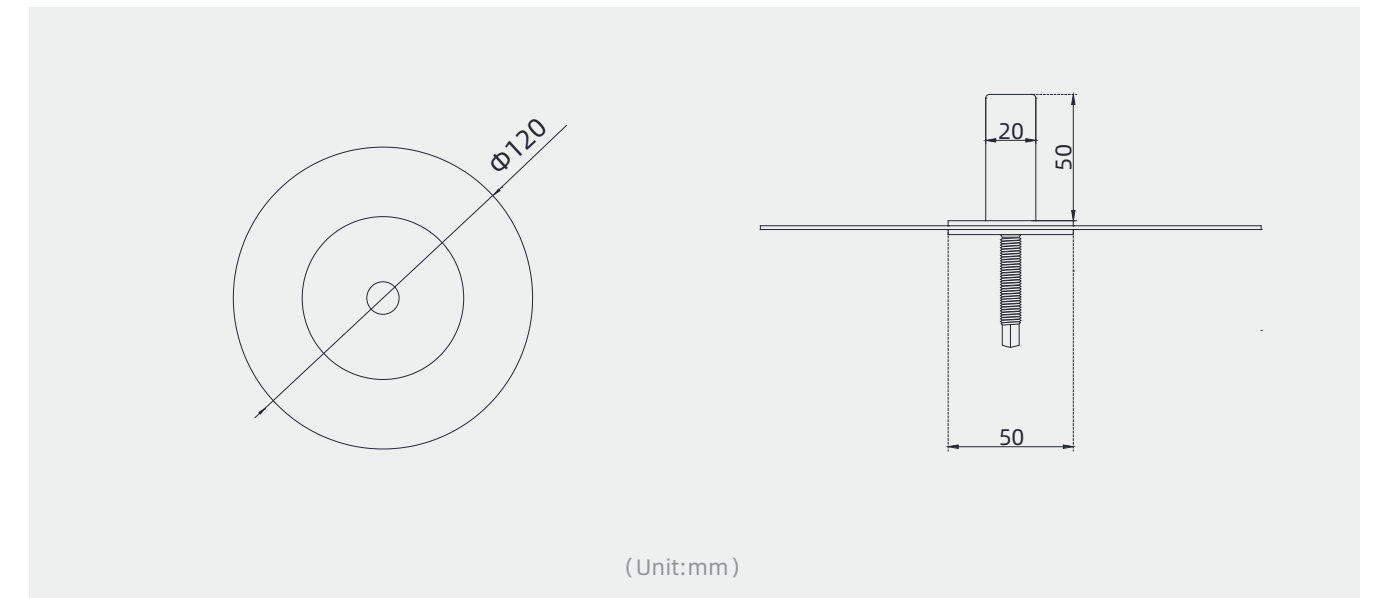
Technical Advantages //

- ✓ **Dual Waterproofing:** Combines hot-air welding with water-soluble adhesive film technology for dual protection. If weld seam leakage occurs, the adhesive film activates upon contact with water to automatically seal the leak
- ✓ **Compact Design:** 120 mm diameter base, small in size yet fixed directly to purlins without compromising load-bearing capacity, suitable for fused tile and other roofing systems

Technical Parameters //

Item	Detail
Material	304 Stainless Steel, TPO/PVC Membrane
Support Membrane	Brand and material customizable, accepts customer-provided materials
Tensile Resistance	≥ 4000 N (on steel plate ≥ 2 mm) ≥ 7000 N (on steel plate ≥ 3 mm)
Design Load	2500N

Dimension Diagram //



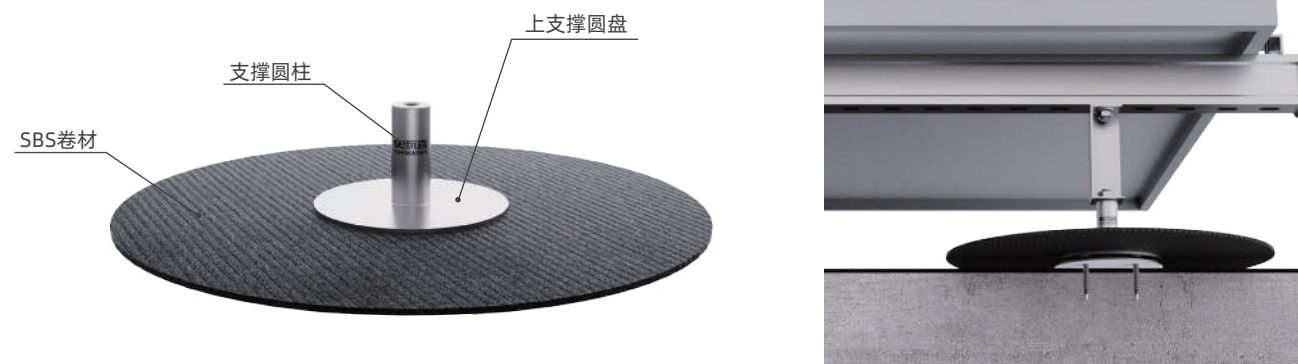
Application Demonstration //



SBS Disc-Fixed PV Support

Scope of Application //

Suitable for PV installation on various flat or standard-slope SBS waterproof membrane roofs. Its unique dual-flange seal design effectively prevents water infiltration. Different fixation solutions can be selected based on substrate conditions, while the SBS flange heat-welding eliminates leakage risks from membrane penetrations.



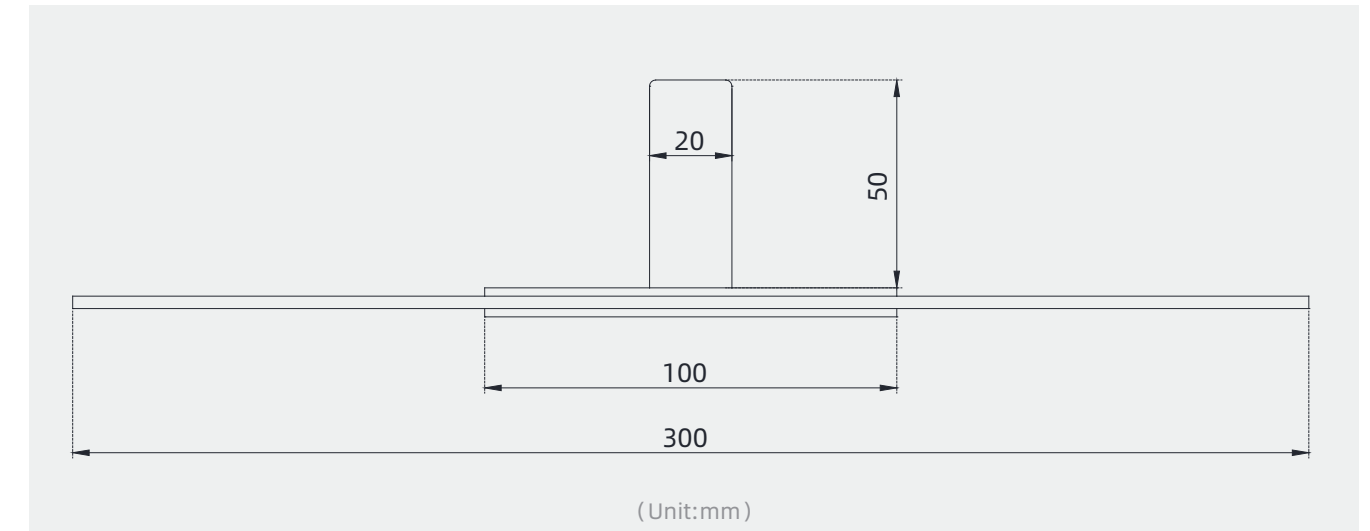
Technical Advantages //

- ✓ 304 stainless steel material provides extended service life
- ✓ Dual Waterproofing: Combines hot-air welding with water-soluble adhesive film technology for dual protection. If weld seam leakage occurs, the adhesive film activates upon contact with water to automatically seal the leak
- ✓ Quick and easy installation, enhances wind uplift resistance of the roof membrane

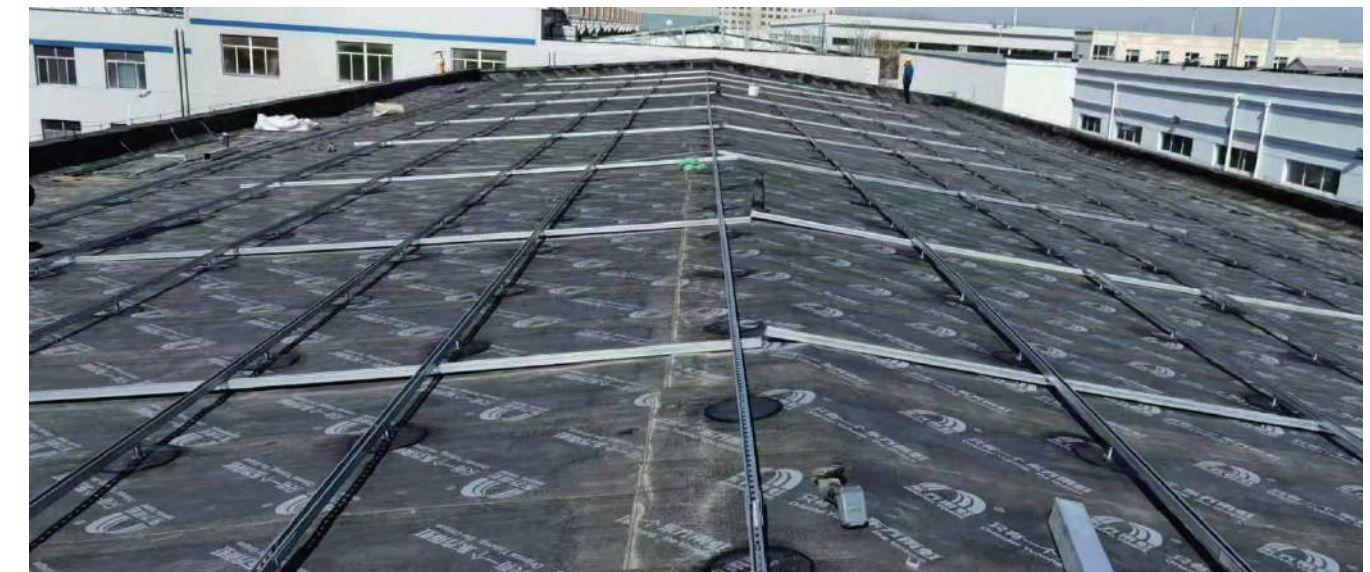
Technical Parameters //

Item	Detail
Material	304 Stainless Steel, SBS Membrane
Support Cylinder Dimensions	Diameter 20 mm, Height 50 mm
Upper Support Disc Dimensions	100mm
Upper Support Disc Dimensions	100mm
Membrane Dimension	300mm

Dimension Diagram //



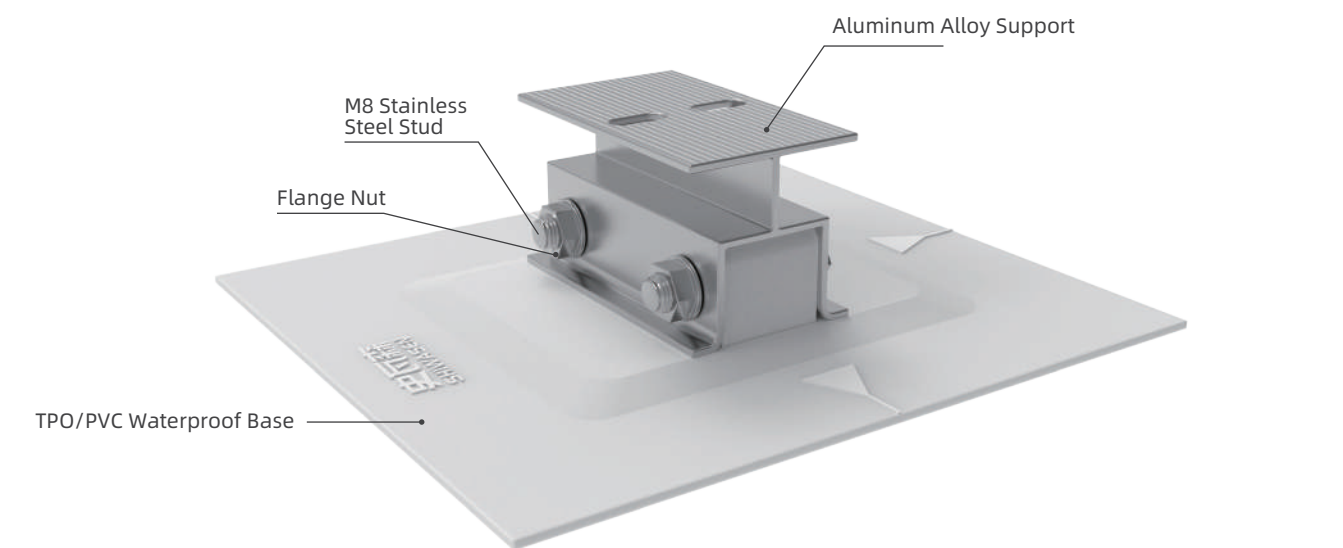
Application Demonstration //



Flexible PV Support

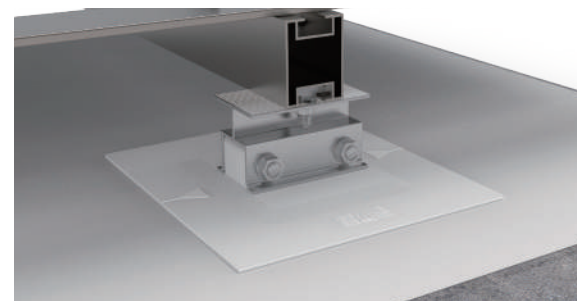
Scope of Application //

A non-penetrating PV support specifically designed for TPO/PVC single-ply roofing systems. It uses highly weather-resistant TPO/PVC polymer material as the base, featuring reinforced lugs with pre-drilled holes at the center for quick assembly via aluminum alloy bases and stainless steel bolts. The support is directly welded to the roof waterproofing layer without membrane penetration, preserving roof integrity while providing excellent pull-out resistance. Suitable for installing PV mounting structures, cable trays, and other equipment, it is an ideal solution for achieving damage-free PV installation on roofs.



Technical Advantages //

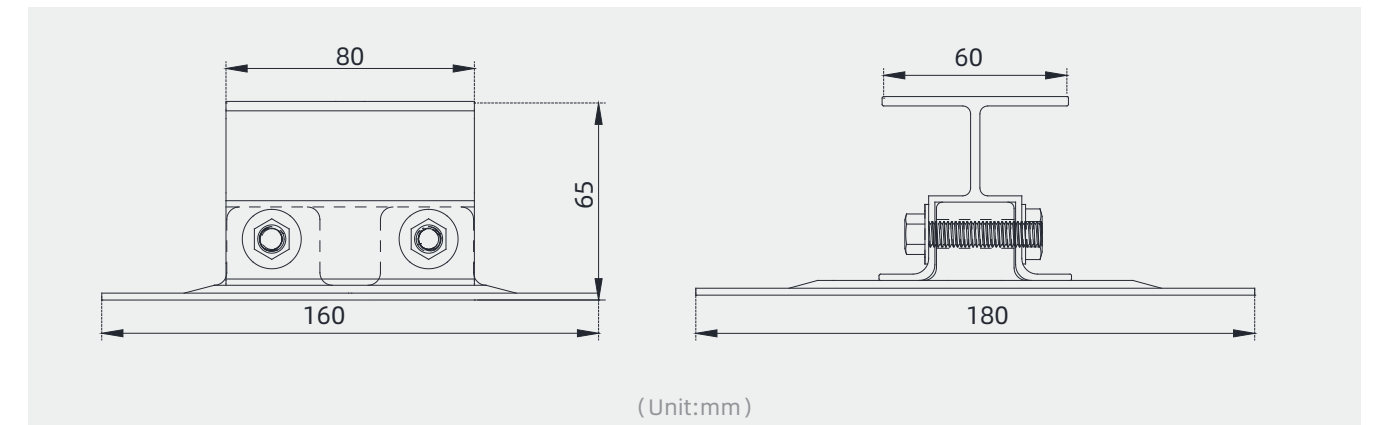
- ✓ Withstands 5490-hour accelerated artificial climate aging test, ensuring service life matching the PV system
- ✓ Non-penetrating design prevents damage to roof structure



Technical Parameters //

Item	Detail
Support Material	6063 Aluminum Alloy
Polymer Base Material	TPO/PVC
Single-Point Pull-Out Strength After Welding	≥ 6000 N (new membrane)
Design Load	1500N
Accelerated Artificial Aging	5490 hours

Dimension Diagram //



Application Demonstration //



PROJECT PRESENTATION

Classic Project Cases - Accessories

- Tesla Gigafactory, Shanghai Lingang
- Geely Commercial Vehicle Plant, Chengdu
- Kia Third Factory, Yueda
- Mobis Third Plant Module Factory
- Volkswagen Plant, Shanghai (Xinjiang)
- Xiaomi Smart Manufacturing Industrial Base Phase II, Beijing
- Chongqing Dajiang Innovation City Intelligent Connected New Energy Vehicle Factory
- Genyang Economic Development Zone New Energy Vehicle Parts Industrial Park
- XAC Final Assembly Intelligent Assembly Plant (629#) Waterproofing Project
- Cainiao Network Phase II, Jiangxia District, Wuhan, Hubei
- Ririshun Industrial Park, Wuhan, Hubei
- XPeng Automotive Industrial Park, Dawang High-Tech Zone, Sihui, Zhaoqing, Guangdong
- CSCEC Strait Wujin New Energy Project, Changzhou, Jiangsu
- Zoomlion Industrial Park, Changsha
- Scania Manufacturing (China) Co., Ltd. Commercial Vehicle Project, Rugao



PV Project Cases

- Qingdao Laixi: BAW (Beijing Automobile Works) 20 MWp PV Project
- Nanjing: Kumho Tire 16.63 MWp Distributed PV Project
- Xuyi County: 18.35 MWp Rooftop Distributed PV Project (County-wide Initiative)
- Tianjin: FAW Toyota Engine Co., Ltd. PV Project
- Yibin, Sichuan: "He Guang Tong Cheng" 20 MWp PV Project
- Shanghai: SICC (Shanghai Super Silicon Semiconductor Co., Ltd.) Rooftop PV Project
- XPeng Automotive Industrial Park, Dawang High-Tech Zone, Sihui, Zhaoqing, Guangdong
- Changzhou: Li Auto 21 MWp PV Project (Zone 2)
- Shanghai Lingang Industrial Park: 10 MWp Rooftop PV Project
- Yibin: Cowin Auto Rooftop 10 MWp PV Project
- Sichuan: DMEGC (Dongci) Phase II Rooftop 10 MWp PV Project
- Changchun: FAW R&D Headquarters Innovation Base 7.1 MWp PV Project
- Hengtian Heavy Industry: 4.7952 MWp Distributed PV Project
- Fuzhou, Fujian: Soueast Motor Rooftop 8.2 MWp PV Project
- Taizhou Binhai: Geely Engine Co., Ltd. Rooftop 5 MWp PV Project
- Chery Jaguar Land Rover Automotive Co., Ltd.: 20 MWp Distributed PV Project

